

BOARD OF DIRECTORS

boardpresident@langhamtheatre.ca

President: Kevin Stinson

Vice-President: Wendy Merk

Secretary: Andrea Pite

Treasurer: Andrew Lee

Members-at-Large to 2017:

Bill Huzar and Rosemary Jeffery

Members-at-Large to 2018:

Sylvia Hosie and Lorene Cammiade

Past President: Luke Krayenhoff

PRODUCTION CHAIRS 2016-18

2016-18 Production Chairs:

Roger Carr and Keith Digby

Langham Court News is published 11 times a year. **Deadline for submissions is the 22nd day of the month preceding the month of publication.** Send submissions to Kathy Macovichuk at newseditor@langhamtheatre.ca

For newsletter address changes or deletions, send them to theatremanager@langhamtheatre.ca

Box Office and Administration

250-384-2142

boxoffice@langhamtheatre.ca

Costume Loft Rentals and Donations

250-384-2025

costumeloft@langhamtheatre.ca

General Inquires

theatremanager@langhamtheatre.ca

Membership

membership@langhamtheatre.ca

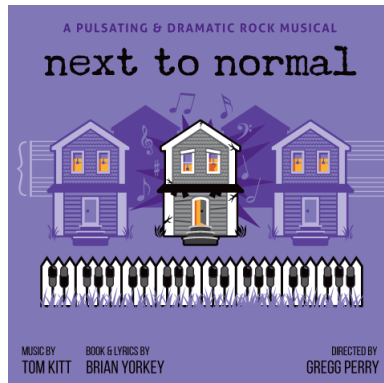
Prop Rentals and Donations

props@langhamtheatre.ca

See our photos on [Flickr](#)

Follow us on Twitter! [@LanghamTheatre](#)

Like us on Facebook! www.facebook.com/langhamtheatre



SEPTEMBER 20-OCTOBER 15, 2016

NEXT TO NORMAL

DIRECTED BY GREGG PERRY

GET YOUR TICKETS NOW

SUBMITTED BY GREGG PERRY

As of yesterday, we have finished staging the play and have worked several scenes more than once. In the next two weeks, we will try to polish the ensemble numbers and start running longer sequences so that the cast will feel as secure as

possible in lines and music as they make the transition to rehearsing on the set.

I am feeling so wonderfully supported by the production team: Drew on props, Geli and Diane on costumes, and Chris and his team who had the platforms built the first day they came together. The cast has been doing great homework on the 38 numbers in the show and their preparation has made it possible for us to make significant progress during rehearsals.



Leah and I have worked cohesively to keep an honest balance between the pain the characters are feeling and the hope and compassion they find. This musical presents new challenges

to our tech team and our musical director, Steve Horak, has been overseeing the sound requirements for the cast and the band so that we can do justice to the score. Adam Wilkinson has exciting ideas about lighting the show in a way that reflects the subject and the rock opera genre.

I can't wait to see the cast onstage and under light. I'm feeling quite optimistic about the production and I don't think it's too soon to say that people should be getting their tickets now.





NEXT TO NORMAL ART SHOW

SUBMITTED BY JEANI REYNOLDS

The work of Margaret Hantiuk will be on display in the Theatre Lounge during the run of Next To Normal.

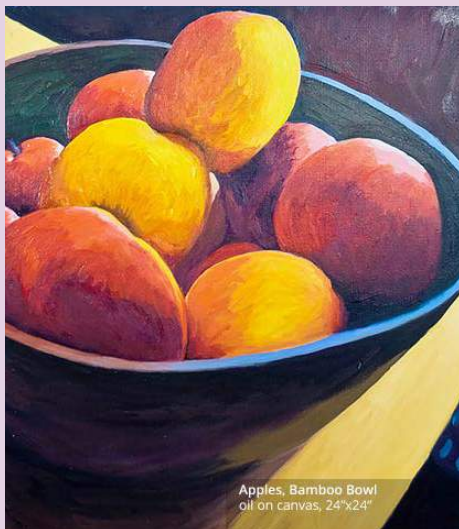
The pieces are available for viewing and purchase pre-show, at intermission or post-show during the show run and during Box Office hours.

Margaret Hantiuk

I enjoy drawing and painting. In my drawings I use water media (gouache, watercolour, acrylic inks) watercolour pencils, graphite, conte, collage, chalk and oil pastels. For my paintings I employ either watercolours or oils.

I was raised in rural Alberta and have always enjoyed being outdoors. I often take photos out in nature and work from them. I as well work "plein air" with watercolours or oils in warmer weather, enjoying the immediacy and challenges of painting outside.

I am interested in the memory of a place: the light, the shadows, the feeling of being there, the mood. Often a narrative develops or the painting becomes somewhat allegorical. Then there is the materiality of the paint, the colour palette and values, the formal pictorial concerns. I like abstracting shapes to create a dynamic composition.concerns.



COSTUME LOFT

SUBMITTED BY LISA LEIGHTON

Thank you! For recent donations to the Costume Loft and Costume Workshop, thanks to: Geli Bartlett; Vinnie Chadwick for Wear2Start; Jane Dewing; Wendy Clapp; Vinnie Chadwick; Ann Scarfe; Barbara Gilbert; Linda Lomas; Pamela St. Denis; Tony Abbott; Erica Thomas; Lorraine Whiting; Alexander Roethel; Gil and Angela Henry for Lily Wallace; Anonymous; Shelley De Hoog; Bronwyn Taylor; Karen McKenzie for Ilean Spanos.

Special thanks to our regular Saturday volunteer, Rory Cheng, for her great help with vacuuming and washing the Costume Loft floor and stairs on August 6. Her help made a huge difference.

Please note: the Costume Loft will be closed from September 10 through 19, 2016.

BOO! If you love costumes (and we know you do) and Hallowe'en (ditto), why not spend some time in the Costume Loft in October, helping renters put together their looks? Many hands make light(er) work during our busiest month, and it's always fun. Loft hours are Mondays 2-7, Wednesdays and Fridays 12-5, and Saturdays 9-1. Volunteers may choose their own days and times, and a full shift isn't required. If you'd like to join us, please contact Lisa Leighton: costumeloft@langhamtheatre.ca (250-384-2025) during Loft hours, or 250-595-5523 at home. Thank you!

OUR NEW HEAD SCENIC CARPENTER

SUBMITTED BY TOM MCCARTHY

We are pleased to announce that Chris Clarke has agreed to become Langham's Head Scenic Carpenter! Many of you know Chris as a member of our prized scenic construction team that has set a high standard for all our productions.

Chris began his responsibilities on August 1, immediately preparing for *Next To Normal*.

If you would like to help out with the construction and painting (as well as anything else at Langham), schedules can always be found on our website at: www.langhamtheatre.ca/members-area/roombooking/



Chris, welcome to this important role within our Langham family and we look forward to working with you and supporting you in making the magic happen.

AUDITIONS



THE CRUCIBLE

By Arthur Miller
Directed by David MacPherson

Performance Dates:
November 18-December 3

Audition Dates: Saturday, September 3, 1-4 p.m. and Sunday, September 4, 5:30-9:30 p.m. Callbacks will be held Tuesday, September 6, at 6:30 p.m.

Please arrange for an audition slot by contacting the director David MacPherson at davidpaulmacpherson@gmail.com. No "drop-in" auditions will be allowed.

If you would like, you can do a prepared piece: however, no longer than 90 seconds; you will be stopped at that time. You may be also required to read a short excerpt from the play during the audition. Please familiarize yourself with the language style. Please DO NOT do something from *The Crucible*.

It is essential that you have read *The Crucible* before auditioning. Rehearsal packages may be picked up at the Langham Court Theatre office during office hours or online at www.langhamtheatre.ca/wp-content/uploads/2016/02/The-Crucible.pdf

THE CHARACTERS

Reverend Parris: Minister in Salem. He believes a faction plans to force him to leave Salem, so he attempts to strengthen

his authority through the witch trial proceedings.

Betty Parris: Parris' daughter. Her father discovers her dancing in the woods, and she later accuses individuals of practicing witchcraft.

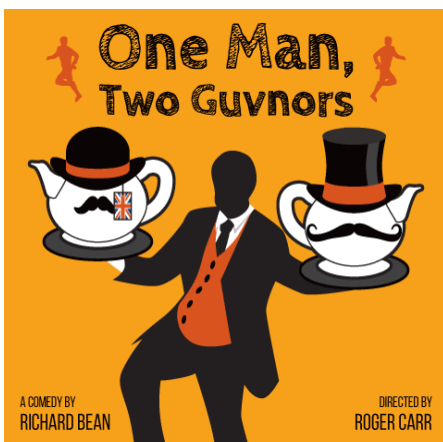
Abigail Williams: Parris' niece. She instigates the witch trials. Leader of the girls.

Tituba: Parris' slave. Parris discovers her with the girls in the woods.

Mrs. Ann Putnam: Wife of Thomas Putnam. She believes that a witch is responsible for the deaths of her seven infant children.

Thomas Putnam: A landowner in Salem. He accuses his neighbours of witchcraft.

continued on next page...



ONE MAN, TWO GUVNORS

By Richard Bean / Directed by Roger Carr
Performance Dates: January 20-February 4

Audition Dates: Friday, September 16, 7-10 p.m. and Saturday, September 17, 1-4 p.m. Be prepared to stay for the entire audition period. **Callbacks will be held Sunday, September 18, 1-4 p.m.**

One Man, Two Guvnors sets the characters and situation in Brighton, England in 1963 and is a slapstick romp with elements of Commedia, slapstick, farce and vaudeville.

Accents at auditions would be delightful and help is at hand. We do have a skiffle band in the show and they perform numerous songs. The cast will also sing one or two numbers but this singing is incidental to the acting and won't be part of the audition.

The following scenes will be worked during the audition.

Character	Pages
Lloyd, Dangle, Charlie (Pauline, Dolly bits)	13-16
Lloyd, Rachel (Skip Charlie)	23-24
Stanley, Frances	25-27
Alan, Frances, Stanley	29-31
Frances, Rachel	35-36
Rachel, Pauleen (Charlie bits)	39-42
Gareth, Alfie, Frances	44-45
Alan, Dangle, Charlie	60-62
Dolly, Frances	65-69

CHARACTERS:

Pauline (20+): Cockney. "They can't make bricks thicker"

Rachel (20+): London accent. Sharp. Plays dead brother Rosco.

Dolly (20+): Servant. Bright and a tease.

Frances (30+): Working class. Harliquin. Easily distracted. Physical comedy.

Stanley (20+): Upper class. Public (Eton'esque) school values.

Gareth (30+): Neutral accent. In charge head waiter.

Alfie (80+): But will cast a young, agile male. Neutral accent.

Lloyd (40+): London/Jamaican.

Alan (20+): Upper class striving to be working class. "Actor."

Charlie (50 +): Cockney. Retired gangster.

Harry (50 +): Upper class. Crooked lawyer.

A variety of company characters will be pulled from the above auditions.

Scripts are available at www.langhamtheatre.ca/wp-content/uploads/2016/02/One-Man-Two-Guvnors-ACT-I.pdf. Please direct any questions to either Roger Carr (director) at rcarr@shaw.ca or Gil Henry (producer) at gilhenry448@gmail.com.

Congratulations to Jason and Amity who recently tied the knot on our very own Langham stage. Wishing you guys all the best.



MAKING THE MOST OF OUR SPECIAL PLACE

Our lovely Langham Court Theatre is a wonderful instrument to connect us to the larger community, introducing many new people to the special place that this is and to the remarkable things that happen inside. So we're getting busier, filling as much of the unused space inventory as possible, widening our community every time. To find out when and where all these exciting things are happening, please visit: www.langhamtheatre.ca/members-area/roombooking/

And, to book YOUR activity, please email Tom at tom@langhamtheatre.ca.



LEARNING OPPORTUNITIES PROGRAM

SUBMITTED BY TOM MCCARTHY

At this writing Langham has presented six events within the Learning Opportunities Program. All workshops were at capacity with a total of 150 people taking part. Since membership is necessary for participation, of that total 43 are new members.

There are many more workshops in various stages of development which will be presented in the fall. We want to be sure that every Guild has at least two Learning Opportunities. Please send your ideas to Tom, our General Manager, at tom@langhamtheatre.ca

With the wonderful success of the program to date, we will be seeking funding to continue the Learning Opportunities Program into the next calendar year.

THE CRUCIBLE AUDITIONS

Continued from previous page...

Ruth Putnam: The Putnams' daughter.

Mary Warren: Servant to the Proctors. She goes along with Abigail and the girls.

Mercy Lewis: Servant to the Putnams and friend to Abigail. She participates in the trials.

John Proctor: Salem farmer and former lover of Abigail's. He openly denounces Parris and does not attend church.

Elizabeth Proctor: Wife of John Proctor.

Reverend Hale: Minister in Beverly. The people of Salem summon him to investigate.

Rebecca Nurse: Wife of Francis Nurse. One of the most respected individuals in Salem.

Francis Nurse: Farmer and landowner in Salem. He is a respected member of the community often called upon to settle disagreements between individuals.

Susanna Walcott: Friend to Abigail. She also takes part in the trials.

Giles Corey: Elderly inhabitant of Salem.

Sarah Good: Beggar in Salem.

Judge Hathorne: A judge in the Salem court.

Deputy Governor Danforth: A special judge serving in the Salem court during the witch trials.

Ezekial Cheever: Appointed by the court to assist in arresting accused individuals.

Marshal Herrick: Appointed by the court to arrest the accused individuals.

Hopkins: Jailer.

**TARGET THEATRE
NEEDS SENIOR
MALE ACTORS
(55 PLUS) FOR
THEIR 2016/17
SEASON**

Contact:
target@islandnet.com





FSMT musical theatre classes provide instruction in the skills of stage acting, singing and dancing. We will also cover crew responsibilities and how cast and crew work together.

Every child can benefit from learning about expressing themselves, listening to others, moving with intention, and having fun with theatre.

Classes run every Saturday from September 17 to November 12, from 9 a.m.-12 p.m. No class on October 8.

Visit www.fsmtheatre.ca/classesandcamps/ for more information and to register.

Target Theatre Presents

ARE YOU OF AGE?

A Fundraiser Performance of Age-Related Drama
at Intrepid Theatre Club
1609 Blanshard St. (off Eisgard)

Saturday • October 15
2 PM & 7:30 PM

Tickets \$22.50 at Ticket Rocket:
www.ticketrocket.co or 250.590.6291

Target Theatre is a Non-Profit Society
Creating Social Transformation Through Theatre
Artistic Director: TONY CAIN

LANGHAM AT THE FRINGE

HERE ARE SOME OF THE FRINGE PERFORMANCES WITH WHICH OUR LANGHAM MEMBERS HAVE BEEN A PART OF...

TICKETS: \$11/\$9 STUDENTS & SENIORS

MUST HAVE A FRINGE BUTTON TO SEE THESE SHOWS

Bowser

Fringe Venue 6: Fairfield Hall
September 1 – 10 p.m.
September 4 – 5:30 p.m.
PG 14: adult themes

Effie and the Vampire, A Lesbianistic Musical Melodrama

Fringe Venue 5: Langham Court Theatre
September 3 – 8:45 p.m.
September 4 – 2:45 p.m.
All ages, musical melodrama

The Old Lady's Guide to Survival

Fringe Site A: Congregation Emanu-El
September 1 – 7 p.m.
September 4 – 2 p.m.
All ages, dramedy

Art of the Eight Limbs

Fringe Venue 7: The Roxy Theatre
September 1 – 8 p.m.
September 4 – 4:45 p.m.
PG 14+: coarse language/adult themes

Driftwood

Fringe Venue 6: Fairfield Hall
September 2 – 8 p.m.
September 3 – 1 p.m.
PG 14+: coarse language/adult themes

Cafe Soap Operas

Fringe Site B: 2% Jazz Coffee
September 1 – 7:30 p.m. & 9:30 p.m.
September 2 – 7:30 p.m. & 9:30 p.m.
September 3 – 7:30 p.m. & 9:30 p.m.
Extremely coarse language/adult themes

[Title of Show]

Fringe Venue 5: Langham Court Theatre
September 3 – 2:45 p.m.
September 4 – 6:30 p.m.
PG 14+: coarse language

Winnie the Pooh

Fringe Venue 2: Downtown Activity Centre
September 3 – 6:45 p.m.
September 4 – 4:45 p.m.
Family entertainment

MARK YOUR CALENDARS

August 22-September 4

Intrepid Theatre's Fringe Festival
(<http://intrepidtheatre.com/festivals/fringe-festival/>)

September 3 & 4

Auditions for *The Crucible* – request an audition time by emailing the director, David MacPherson at davidpaulmacpherson@gmail.com

September 9–11

Langham will be having the front deck refinished. Please use another door to enter the building.

September 10

The Peninsula Players is holding auditions for their Christmas panto, *Little Red & The Wolf* (www.thepeninsulaplayers.ca/)

September 12

Board of Directors meeting

September 14 & 17

St. Luke's Players is holding auditions for their Christmas panto, *Aladdin* (www.stlukesplayers.org/auditions.html)

September 16 & 17

Auditions for *One Man, Two Guvnors*

September 27-October 15

Theatre Inconnu presents their production of *Mating Dance of the Werewolf* (www.theatreinconnu.com/)

September 28 & 29

Previews of Langham's production, *Next to Normal*

September 30–October 15

Langham's production of *Next to Normal*

October 2

Art show reception for the work of Margaret Hantiuk

October 2, 3, 16 & 17

Performance of *Tuesdays With Morrie*, starring Perry Burton as Mitch and Richard Michelle-Pentlebury as Morrie. Shows will be held at Langham. Tickets will be available at the Box Office. This is a fundraising performance for ALS Canada.

October 3

Board of Directors meeting

THEATRE INCONNU PRESENTS

MATING DANCE OF THE WEREWOLF

SEPTEMBER 27–OCTOBER 15

by Mark Stein, and directed by Wendy Merk and Lorene Camiade.

Please be aware that this play has visual elements that may be disturbing to some.

Ken is a detective who suspects he is being stalked. Oddly enough, he thinks he likes it. When finally confronted by Abby, a painfully shy young woman with a disarmingly forthright manner, he is unable to resist his profound attraction to her. Despite warning signs, he soon finds himself deeply involved in the most terrifying relationship he could never have imagined. *Mating Dance of the Werewolf* is an unorthodox romance that looks at how infatuation influences our willingness to suspend disbelief. This is a play that will nudge you into the Halloween spirit.

Featuring: Leilani Fraser-Buchanan, Justin Guthrie, Andrew Pirie, Renee Yakemchuk and Wayne Yercha

September 27 (preview), 28, 29, October 1, 4, 6, 7, 8, 12, 13, 14, 15 at 8 p.m.

October 1, 8, 15 at 2 p.m.

Reservations and Ticket Sales

Through Ticket Rocket at www.ticketrocket.co or call 250-590-6291 (\$2.50 surcharge).

Or you can reserve directly through Theatre Inconnu by email at tinconnu@islandnet.com or call (250) 360-0234.

Complimentary tickets, special needs seating, and subscribers: need to reserve directly through Theatre Inconnu.

Ticket prices: \$14 (regular), \$10 (seniors 60+, students, unwaged)

September 27: preview is \$7

October 4: Pay-What-You-Wish Admission

Theatre Inconnu is located at 1923 Fernwood Road (across the street from the Belfry Theatre).

Theatre Inconnu is wheelchair accessible.

www.theatreinconnu.com



Tuesdays with Morrie

*An old man, a young man,
and life's greatest lesson.*

In 1997, Mitch Albom published the true story about the relationship between himself and his college sociology professor. A relationship grew, then grew apart, then grew together again. This is the story of their reconnection as Morrie Schwartz suffers through the final stages of ALS, and how the old professor imparted one final lesson to his young friend.

Richard Michelle-Pentelbury
as Morrie

Perry Burton as Mitch

This production is a fundraiser for ALS Canada, with four performances at Langham Court Theatre, October 2, 3, 16 and 17. **All tickets are \$10, available through the Langham Box Office.**

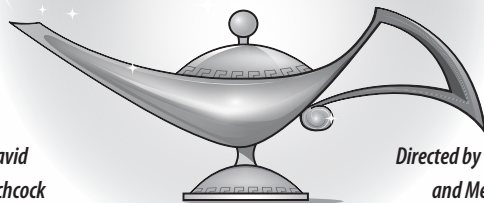


ST. LUKE'S PLAYERS

COMMUNITY THEATRE SINCE 1948!

AUDITION NOTICE FOR OUR ANNUAL PANTO:

Aladdin



Written by David
and Helena Hitchcock

Directed by David Hitchcock
and Merry Hallors

Wed Sept 14 • 7pm ~OR~ Sat Sept 17 • 2pm

Callbacks: Sun Sept 18 • 2pm

No appointments are necessary, please show up promptly at the start time.

Play runs Dec 16, 2016 until Jan 2, 2017

For further information on this auditon, please go to www.stlukesplayers.org