

Langham Court Theatre

presents

# CABARET



**Book by Joe Masteroff**

**Music by John Kander**

**Lyrics by Fred Ebb**

**Directed by Roger Carr**

**Music Directors**

**Rick Underwood & Angela Carter**

**Choreographer Jennifer Sanders**

**January 15 - February 1, 2014**

# Palm Court *light* Orchestra

2013 - 2014 SEASON

## Valentine 2014

Shadan Saul Guerrero soprano  
Sunny Shams tenor

This concert that celebrates love features two young singers in duets from Puccini's *La Boheme* as well as the operettas of Franz Lehár, Sigmund Romberg, Ivor Novello and Richard Tauber making this the most romantic of concerts.



UVic Centre  
250 721 8480

Saturday Feb 15  
7:30pm



## THE HOCKEY SWEATER

SUNDAY, JANUARY 26 | 2:30PM | ROYAL THEATRE

After rave reviews in Toronto and Calgary, this delightful new orchestral work, based on the beloved book by Roch Carrier comes to Victoria. Join the Victoria Symphony and the author himself for an afternoon of music and story sure to delight the whole family!

Come early for the VS Instrument Petting Zoo and other activities in the lobby.



VICTORIA  
SYMPHONY

Tania Miller, Music Director

THRIFTY  
FOODS

Spotball

Island Parent

98.5  
Oceon

TIMES COLONIST

Tickets: 250.385.6515  
victoriasymphony.ca



## Director's Notes

In 1929 novelist Christopher Isherwood arrived in Berlin, a city with few constraints, seeking creative inspiration for his writing and sexual opportunity for himself. The characters he met there populate *The Berlin Stories* and inspired the play *I Am A Camera* as well as the stage musical and film *Cabaret*.

Isherwood's exploration of life in Berlin and the fascinating people he met there are seen through the narration of Clifford Bradshaw in *Cabaret*. Kander and Ebb's musical centers on the relationship between Cliff and Sally Bowles, an English girl entertaining at the Kit Kat Klub. Their story begins with the charm and celebration of New Year's Eve in 1929 and ends as the Weimar Republic collapses.

The characters in *Cabaret* confront a changing world as Hitler's Nazis grow in power. Fraulein Schneider, Cliff's landlady, is faced with the choice of growing old alone or marrying the Jewish fruit shop owner Herr Schultz. At the Kit Kat Klub the Emcee satirizes Nazi intolerance and asks, "Why can't the world 'Leben and Leben lassen' - 'Live and Let live?'" Yet still Sally sings, "No use permitting some prophet of doom / to wipe every smile away." Wow! With Rick Underwood and Angela Carter directing the music and the magical Jennifer Sanders choreographing everyone plus the gorilla, we have put together a musical that really does it!

**Roger Carr**

### Dedication:

This show is lovingly dedicated to our friend and past producer, **Thelma Midori**. She is sadly missed and would have loved *Cabaret*.

Langham Court Theatre  
presents

# CABARET

the 1998 Broadway Musical Revival

Book by Joe Masteroff

Based on the play by John Van Druten and

Stories by Christopher Isherwood

Music by John Kander, Lyrics by Fred Ebb

Broadway production directed by Harold Prince

Produced for the Broadway Stage by Harold Prince

**January 15 - February 1, 2014**

Cabaret is produced by arrangement with, and the music and dialogue material furnished by TAMS-WITMARK MUSIC LIBRARY, INC.,  
560 Lexington Avenue, New York, NY 10022.

Director	<b>ROGER CARR</b>
Music Directors	<b>RICK UNDERWOOD, ANGELA CARTER</b>
Choreographer	<b>JENNIFER SANDERS</b>
Asst. Choreographer/Dance Captain	<b>STEPHANIE GEEHAN</b>
Producers	<b>GIL &amp; ANGELA HENRY</b>
Stage Management Team	<b>SYLVIA LINDSTROM, JON SCHEER &amp; KATT CAMPBELL</b>
Set Design	<b>BILL ADAMS</b>
Lighting Design	<b>KARRIE AYOTTE</b>
Costume Design	<b>DIANE MADILL</b>
Sound Design	<b>ALAN MACKENZIE</b>
Properties/Set Décor	<b>SALLY CRICKMAN</b>

## Cast

<b>KYLE KUSHNIR</b>	Emcee
<b>AMANDA GRAY</b>	Kit Kat Girl Rosie
<b>KATELYN MACKELLEN</b>	Kit Kat Girl Lulu
<b>ASHLEY EVANS</b>	Kit Kat Girl Frenchie
<b>LAUREN GIRARD</b>	Kit Kat Girl Texas
<b>AIRLIE STURROCK</b>	Kit Kat Girl Fritzie
<b>EUPHEMIA MACMURCHY</b>	Kit Kat Girl Helga
<b>DAVID BRILLINGER</b>	Kit Kat Boy Bobby/Gorilla
<b>MICHAEL ROMANO</b>	Kit Kat Boy Victor/Sailor
<b>SHANE JEFFERY</b>	Kit Kat Boy Hans/ Sailor/Customs Officer
<b>MARK RIISHEDE</b>	Kit Kat Boy Herman/Sailor/Max
<b>CHELSEA KUTYN</b>	Sally Bowles
<b>KEN YVORCHUK</b>	Ernst Ludwig
<b>GRIFFIN LEA</b>	Cliff Bradshaw
<b>SUSIE MULLEN</b>	Fraulein Schneider
<b>JO BARNES</b>	Fraulein Kost
<b>ALF SMALL</b>	Herr Schultz
<b>CHASE ARDEN, ETHAN OTTO,</b>	
<b>HARRISON MUNDSCHUTZ</b>	Hitler Youth
<b>ANGELA CARTER</b>	Band Leader/Piano
<b>GENEVIEVE WEBER</b>	Trombone
<b>KATRINA GREENFIELD HANEVELT</b>	Tenor Saxophone
<b>RUSSELL LOVAT</b>	Drums

# Musical Numbers

## Act I

### Scene 1

Kit Kat Klub  
*Wilkommen*

### Scene 2

Train to Berlin

### Scene 3

Cliff's Room  
*So What?*

### Scene 4

Kit Kat Klub  
*Don't Tell Mama*

### Scene 5

Kit Kat Klub  
Dressing Room  
Kit Kat Klub  
*Mein Herr*

### Scene 6

Cliff's Room  
*Perfectly Marvelous*

### Scene 7

Kit Kat Klub  
*Two Ladies*

### Scene 8

Schneider's Living  
Room  
*It Couldn't Please  
Me More*

### Scene 9

Berlin  
*Tomorrow Belongs  
To Me*

### Scene 10

Cliff's Room  
*Maybe This Time*  
Kit Kat Klub  
*Money*

### Scene 11

Schneider's Living  
Room  
*Married*

### Scene 12

Schneider's Living  
Room  
*Tomorrow Belongs  
To Me*

## Act II

### Scene 1

Kit Kat Klub  
*Kick Line*

### Scene 2

Fruit Shop  
*Married (Reprise)*

### Scene 3

Kit Kat Klub  
*If You Could See Her...*

### Scene 4

Cliff's Room  
*What Would You Do  
Kit Kat Klub  
I Don't Care Much*

### Scene 5

Kit Kat Klub  
*Cabaret*

### Scene 6

Cliff's Room

### Scene 7

Train from Berlin  
Hitler's Germany

There will be  
a 15 minute  
intermission

# Production Team

Assistant to the Director  
Head Carpenter  
Set Construction

Set Painters  
Wardrobe Mistress  
Seamstresses

Dressers

Stage Crew

Lighting Board Operators  
Follow Spot Operators  
Lighting Crew

Sound Operators  
Hair Design  
Make-up Consultant

PETA MACKENZIE  
DOUG ANDERSON

MIKE KUSS, CHARLEY ENCELL, BARRY GRIMSHAW, JULIUS MASLOVAT,  
DOUG CRAIG, BILL ADAMS, TOM HOLDER, GORDON ALEXANDER  
BILL ADAMS, JOHN SMITH

PEARL ARDEN

DIANE MADILL, TRISH MACDONALD, ERIKA SCHWEITZER,  
SHARON MADILL, SUE McCASKILL, SUSAN FERGUSON, PALOMA PONTI  
EILEEN BENNETT, JOY FARRELL, JANE KRIEGER, SANDY SIRDIK, LYNN CADRAIN, PALOMA PONTI, JENNIFER BELL,  
MADELEINE MILLS, JEAN deCARTIER

LEIGH ROBINSON, JASMINE DAVIDSON, ROB MILLAR,  
FINN ARCHINUK, DANI RECALMA

SARAH INNES, CAROL-ANNE MOORE

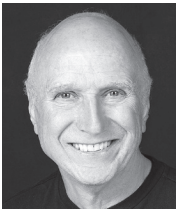
PAUL HILTON, KEN MASON

PERRY BURTON, KEN MASON, PAUL HILTON, FINN ARCHINUK,  
CAROL-ANNE MOORE, SARAH INNES, ALAN MACKENZIE,  
CORINNA GILLILAND, TASIA SCHWARZE

ALAN MACKENZIE, PATRICK HEATH, ODILE NELSON

LAL O'CONNOR

DAVID HARDWICK



## ROGER CARR

*Director*

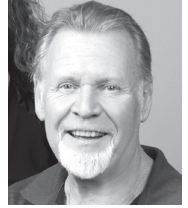
Recent directing includes *Miss Saigon*, *The Drowsy Chaperone*, *The Laramie Project*, *Sweeney Todd*, *Grease*, *Songs For A New World*, *Rent*, and *The History Boys* and in 2000 *Cabaret*. The entire production team and cast of our show has been perfekt wunderbar (perfectly marvelous).

## RICK UNDERWOOD

*Music Director*

Rick is a Langham life member and has been music director for 50 shows over the last 40 years. Highlights include *The Boy Friend*, *The Club* and working with Angela Carter on *Cabaret*.

Says Rick "Working with the production team and very talented cast of *Cabaret* has been a joy!"



## ANGELA CARTER

*Music Director*

Angela's roots in classical piano & voice were eclipsed by her passion for musical theatre, and after a twenty year hiatus, she's thrilled to be back, doing her first show with Langham! Bands: Doc & the Doo-Wops, Brainchild, String of Pearls (re-united for gigs this summer). Shows: Music Director/Pianist *Chicago*, *Three-Penny Opera*, *Godspell* (Four Seasons). Accompanist:

*Cabaret* (VOS), *Guys & Dolls*, *Music Man*, *Camelot* (Oak Bay Secondary).

Currently Angie teaches piano & vocal coaching, and plays seniors' shows with her 89 year young mom, Ginny, in *Two Can Do*.

## Production Biographies

## JENNIFER SANDERS

*Choreographer*

Jennifer is so happy to be working at Langham court with such a talented cast! She has been dancing, singing & acting as long as she can remember. Some of her professional experiences include Alberta Ballet Co., Citadel Theater, Belfry Theater, Courtenay Youth Music Center & Butchart Gardens.



## STEPHANIE GEEHAN

*Assistant to the Choreographer / Dance Captain*

Stephanie has enjoyed being a part of the team who are bringing *Cabaret* to life here at Langham Court. The last time she was involved with this theatre she directed and choreographed *Jacques Brel*. Most recently, Stephanie choreographed *The Sound of Music* for the Victoria Operatic Society.

## GIL & ANGELA HENRY

*Producers*

Gil and Angela are life members of Langham and this is the first time they have produced together. Usually they make every effort to stay at arms length from Angela's acting or directing and Gil's producing. Angela was last seen directing *Lady Windermere's Fan* and Gil produced *The Drowsy Chaperone*. They are thrilled to be working together on this new phase of their marriage with such an excellent team and such a good story.





**SYLVIA LINDSTROM, JON SCHEER & KATT CAMPBELL**

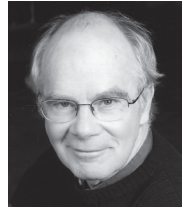
*The Stage Management Team*

United again after a successful collaboration on *The 39 Steps* from last season, Sylvia, Jon and Katt are having a wonderful time at the Kit Kat Klub and know you will too. In their spare time away from *Cabaret* they are involved in other theatre projects. Jon, recently onstage at St. Luke's Players, will be directing for them in the spring. Katt can be seen every Tuesday in Sin City at the Victoria Event Centre.

**BILL ADAMS**

*Set Design*

Happy to be working again with Roger Carr and his team, Bill has created an evocative set which can easily morph into the show's many scenes. Bill's previous designs at Langham Court include *The Drowsy Chaperone*, *84 Charing Cross Road*, *Elizabeth Rex* and *The Beauty Queen of Leenane*.



**KARRIE AYOTTE** (formerly Wolfe)

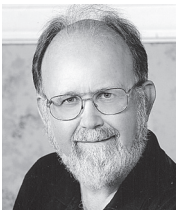
*Lighting Design*

Karrie lit *Cabaret* almost 20 years ago, so this feels like coming home. Thanks to Roger, the production team, and the cast and crew for creativity and passion, and my supportive husband Todd. Selected designs: *The 39 Steps*, *Lady Windermere's Fan*, *The Drowsy Chaperone*, *The Laramie Project*, *Under Milkwood*. In memory of phil, who was there the first time.

**DIANE MADILL**

*Costume Design*

Some past credits include *Lady Windermere's Fan*, *The Drowsy Chaperone* and *A Month in the Country*. Di would like to thank Roger for including her in this marvelous show and the cast and crew for their support. She would also like to thank Pearl for invaluable help, all of the sewers, and special thanks to Trish, Erika and Shar for the many hours spent sewing. Thanks also to Terry, whose support means the world.



**ALAN MACKENZIE**

*Sound Design*

Alan has been involved with Langham Court since High School back in the 60's. He has designed sound for numerous productions both at Langham and VOS and was Sound Technician for "String of Pearls", "The Victoria Broadway Chorus" and more recently "The Starlite Pops Choir". He is currently the Technical Director for Langham Court.

**Production Biographies**

**SALLY CRICKMAN**

*Properties/Set Décor*

Sally is delighted to be working on a musical again. She had such fun doing decor and props for *The Drowsy Chaperone*, Sally thanks John, without whose help she could not do this. GEFALLEN!



## About the Creators

The music for *Cabaret* was written by the team of **Kander and Ebb** whose numerous Broadway successes included *Chicago*, *Kiss Of The Spiderwoman*, and *Curtains*. **Joe Masteroff** wrote the script, which has its origins in **Christopher Isherwood's** sketches of his time in Berlin from 1930/33. **John Van Druten's** stage play *I Am A Camera* opened on Broadway in 1951 and in 1966 the musical *Cabaret* won numerous Tonys, including Best Musical. The 1972 film adaptation of *Cabaret* won 8 Oscars. Our production uses the script that won the 1998 Tony for the best revival.

## Acknowledgements

Good Neighbors Thrift Store Duncan, Geli Bartlett, Sarah Burke, Amanda Davidson, Al Corby, Terry Stitt, Sid at Capital City Tuxedos, Charlotte at Victoria Costumes, Carol Frank, Wade Hartwell, Lisa Leighton, Shelly Loewen, Ned Lemley, Susan Ferguson, St. Mathias Anglican Church, Stephanie Sartore, Ruth Diamant, Victoria Operatic Society, Lena Forster, Iris McGregor-Bannerman, Signi Murgatroyd, Christie's Carriage House Pub, Nick Stull, Todd Ayotte, YM-YWCA.

**Please refrain from using perfume/cologne when attending a performance. Some of our patrons are highly allergic to certain scents. Thank you.**

**PICNIC**  
By *William Inge*

1953  
PULITZER  
PRIZE  
WINNER!

University  
of Victoria

**February 13 - 22, 2014**  
Director: Peter McGuire | Sets: Jonathan Maxwell  
Costumes: Pauline Stynes | Lighting: Allan Stitchbury | Stage Manager: Becca Jorgensen  
**250-721-8000 | WWW.PHOENIXTHEATRES.CA**

**“Wilkommen” 2014!**

**HP Hillside Printing**  
Educate. Inform. Entice. Inspire.

3050 Nanaimo Street, Victoria, BC  
Ph: (250) 386-5542 • Fx: (250) 386-7838  
sales@hillsideprinting.com www.hillsideprinting.com





Cast and Crew of *Cabaret*



Take the “**DRAMA**” out of  
your next mortgage.

Call Stephen Beugeling  
Mortgage Consultant  
250.881.6008



Canada's  
Mortgage Experts™  
invis Gateway

**P R E S T I G E**  
PICTURE FRAMING ETCETERA

OVER 30 YEARS IN VICTORIA AT 2002 OAK BAY AVENUE  
250-592-7115 • [www.prestigepictureframing.ca](http://www.prestigepictureframing.ca)

Enhance and upgrade your present or newly acquired art work  
to current conservation standards and design concepts.

**KYLE KUSHNIR***Emcee*

Kyle Kushnir loves playing the Emcee. Previous Emcee credits include Stacey and Mike's wedding, Lisa and Joe's wedding, Kate and Shaun's wedding, and Dale and Ryan's wedding. He's also no stranger to Langham Court, where he's appeared as Ned in *Elizabeth Rex*, and Man in Chair in *The Drowsy Chaperone*.

**AMANDA GRAY***Kit Kat Girl Rosie*

Amanda is a principal dancer and co-founder of Ballet Étoile Canada. She has performed with Blue Bridge Repertory Theatre and Canadian Pacific Ballet and is excited to be onstage at Langham Court! She is a CCPA graduate and holds a Bachelor of Science with Distinction from the University of Victoria.

**KATELYN MACKELLEN***Kit Kat Girl Lulu*

Katelyn is excited to once again be prancing around in her underwear on stage after appearing as Vietnamese hooker #6 in Victoria Operatic Society's production of *Miss Saigon* earlier this year. She is thankful to her boyfriend for supporting her work at the Kit Kat Klub and believes that he deserves lots and lots of pineapples.

**Cast Biographies****ASHLEY EVANS***Kit Kat Girl Frenchie*

Ashley has been dancing professionally in Victoria since 2005, performing with Ballet Victoria, Blue Bridge Repertory Theatre, and as Principal Dancer with Canadian Pacific Ballet. Ashley is currently a co-founder and Principal Dancer of Ballet Étoile Canada. She is thrilled to be performing in her first production with Langham Court Theatre.

**LAUREN GIRARD***Kit Kat Girl Texas*

Lauren could not be more thrilled to be back into the Musical Theatre world. After a 5-year break from the business, she is more passionate and determined than ever to put her heart and soul into the role of Texas, a saucy and robust Kit Kat girl.

**AIRLIE STURROCK***Kit Kat Girl Fritzie*

Airlie has been dancing and performing since the wee age of 3, and has worked with many artists/groups. Her favorites are: ShowTime: Butchart Gardens, *Joseph and The Amazing Technicolor Dreamcoat*, and the Danny Grossman Company. She has a dance/theatre degree from Ryerson. In real life she's a massage therapist.

**EUPHEMIA MACMURCHY***Kit Kat Girl Helga*

Euphemia is a second year acting specialist at the UVic Department of Theatre. This is her first show with Langham Court. Past credits include *Henry V* (Chorus, Queen Isabel), *Romeo and Juliet* (Nurse), and *Cymbeline* (Cymbeline) with the Stratford Shakespeare School, and five seasons with Toronto dance company YMI Dancing.

**DAVID BRILLINGER***Kit Kat Boy Bobby / Gorilla*

David is thrilled to be performing at Langham Court once again. He was last seen on stage in VOS's 2011 production of *White Christmas*. This past spring David Stage Managed VOS's production of *Miss Saigon* at the McPherson Theatre and is the resident Stage Manager for the Cheesecake Burlesque Revue.

**MICHAEL ROMANO***Kit Kat Boy Victor / Sailor*

Michael's most recent appearances were as Elwood P. Dowd in *Harvey*, Lord Darlington in *Lady Windermere's Fan* and *The Woman in Red Dress* in *The Golden Dragon*. He is now delighted to be hoofing it up in *Cabaret*.

**SHANE JEFFERY***Kit Kat Boy Hans / Sailor / Customs Officer*

*Cabaret* marks Shane's second Canadian Theatre experience and second under the direction of Roger Carr after appearing in VOS's *Miss Saigon* in May 2013. Before immigrating to Canada from Australia in 2011, Shane's theatre appearances spanned 30 years from playing a Newsboy in *Gypsy* in 1986 to back-up dancer for Australian Appearances of Chaka Khan and Sheena Easton in 2000.

**MARK RIISHEIDE***Kit Kat Boy Herman / Sailor/Max*

Mark is so excited to have joined the cast of *Cabaret*, his second production with Victoria Theatre Guild at Langham Court. He has recently performed for local audiences with Victoria Operatic Society (*Annie*), Gotta Getta Gimmick (*chorus|line|cabaret*), Urban Arts Productions (*Into The Woods*) and Saltwater Inc. (*Seussical*). Thank you for supporting live theatre in Victoria!

**CHELSEA KUTYN***Sally Bowles*

As soon as she could walk and talk, Chelsea started performing. Now a classically trained singer and dancer she hopes to pursue a professional career in the arts after completing her Commerce degree. This is Chelsea's first show with Langham and she is thrilled to play such a vibrant character.

**KEN YVORCHUK***Ernst Ludwig*

Ken's thrilled to be acting again after a long hiatus. Previous productions include *Doctor In Spite of Himself*, *Arsenic and Old Lace*, and *The Shadow Box*. He dedicates his performances to his wonderfully supportive wife and kids, parents, siblings, and the memories of his europäischen Grosseltern.

**GRIFFIN LEA***Cliff Bradshaw*

Griffin has had the great fortune of working with a myriad of talented artists both locally and abroad in New Zealand and has been honoured to be welcomed into the Langham family. Recent credits: Dr. FrankN'Furter, *Rocky Horror Picture Show*; Jesus, *Godspell*; Don Lockwood, *Singin' In The Rain*; Martin Lloyd, *Society Slump Superstars*.

**SUSIE MULLEN***Fraulein Schneider*

Susie is happy to return to Langham (*Dancing at Lughnasa* – 2002) to work with the talented cast and production crew of *Cabaret*. She has performed in Victoria, Regina, Tucson, Seattle, and Chicago. Last summer, she was seen as Mistress Quickly in *Merry Wives of Windsor*.

**JO BARNES***Fraulein Kost*

Having recently appeared as Lady Plymdale in *Lady Windermere's Fan*, Jo is delighted to back on the Langham stage telling another story but with music in the mix & decidedly different costumes. Jo has performed with many groups including Gilbert & Sullivan, Vic Shakespeare, Four Seasons, Peninsula Players, St. Luke's, Mountain Dream. Thanks to Roger for this great opportunity & Mitch for his support.

**ALF SMALL***Herr Schultz*

This is Alf's ninth show for Langham court. Recent roles include Aldolpho in *Drowsy Chaperone* and Man 2 in *Jacques Brel*. While he occasionally pines for the big hair of the latin lothario, he is proud to portray the heartburn-plagued, follicly challenged, Herr Schultz. And then, of course, there's the fruit.

**Cast Biographies****HARRISON MUNDSCHUTZ, ETHAN OTTO, CHASE ARDEN,***Hitler Youth*

This is the Langham debut for all three of these talented boys. Chase is a grade 9 student at Dunsmuir School; Harrison is in grade 8 at Gordon Head Middle School and Ethan is in grade 10 at St. Michael's University School.

**THE BAND**

Angela Carter, band leader, piano; Genevieve Weber, trombone; Katrina Greenfield Hanevelt, tenor saxophone; Russell Lovat, drums.

President Luke Krayenhoff  
 Past President Toshik Bukowiecki  
 Vice-President Karrie Ayotte  
 Treasurer Jon Scheer  
 Secretary Andrea Pite  
 Production Chair 2013-14 Odile Nelson  
 Production Chair 2014-15 Angela Henry  
 Members at Large Michael Kuss  
 Vinnie Chadwick  
 Rosemary Henry

## Board of Directors

Bill Adams  
 Jim Boardman  
 John Britt

### Life Members

Toshik Bukowiecki  
 Ginny Carter  
 Roger Carr  
 Michael Chadwick  
 Vinnie Chadwick

Antoinette Church  
 Elsie Farr  
 John Fear  
 Jane French  
 Phyllis Gaskell  
 Corinna Gilliland  
 Barry Grimshaw  
 Jill Groves  
 Kai Hansen  
 Peta Heald  
 Angela Henry

Gil Henry  
 Ned Lemley  
 Sylvia Lindstrom  
 Nan Long  
 Alan MacKenzie  
 Peta MacKenzie  
 Thomas Mayne  
 Leonard McCann  
 Judith McDowell  
 Dick Newson  
 Sylvia Rhodes

Drew Shand  
 Reg Taylor  
 Paul Terry  
 Graham Thomson  
 Jean Topham  
 Judy Treloar  
 Michael Tyler  
 Rick Underwood  
 Barb Waldner  
 Jutta Woodland  
 Brian Woodman

Programme Advertising, Design and Production



P.O. Box 8629 • Victoria V8W 3S2 • 250.480.3206  
 Publishers **Philomena Hanson/Paul Hanson** • Design/Production **Lyn Quan**  
 Email: [vicarts@vicarts.com](mailto:vicarts@vicarts.com) [www.vicarts.com](http://www.vicarts.com)



*Best wishes to all  
 Langham Court Theatre  
 patrons for a  
 theatre-rich 2014!*

**Carole James, MLA**

Victoria-Beacon Hill Community Office  
 1084 Fort Street • tel: 250.952.4211  
[carole.james.mla@leg.bc.ca](mailto:carole.james.mla@leg.bc.ca)  
[www.carolejamesmla.ca](http://www.carolejamesmla.ca)

# The Graduate

A comedy adapted by Terry Johnson

Based on the novel by Charles Webb

And the motion picture screenplay by  
 Calder Willingham and Buck Henry

By special arrangement with StudioCanal



Directed by **Judy Treloar**

**Mar 06 to Mar 22**

**LANGHAM** Box Office + Info 250-384-2142  
**\* COURT \*** 805 Langham Court (off Rockland)  
**THEATRE** [www.langhamtheatre.ca](http://www.langhamtheatre.ca)

## Art Exhibition

**Brenda Binnie** is a Canadian Artist, who is gaining rapid recognition for her colourful, vibrant, paintings. She began honing her craft after spending many years raising her family & being a Local Government politician. Still working full time, Brenda lets her everyday stress bring forward her ability to use bright dazzling colors, which portray vividly the beauty of her paintings. She is inspired by the gardens she keeps, the people in her life and the places she has traveled. These pictures are brought to life with the explosion of her artistic ability. They portray what she loves to tend and scenes of peaceful beauty. Brenda makes her home in Victoria British Columbia and believes in living your dream!

Art is available for viewing in the lounge during theatre hours. Admission-free art shows are held the first Sunday of each show run. For more information, please call administration at 250-384-2142 or visit [www.langhamtheatre.ca/about/art-shows](http://www.langhamtheatre.ca/about/art-shows)

ENGAGE YOUR SENSES AND BRIGHTEN YOUR WINTER  
WITH THE **HOTTEST THEATRE** FROM THE COLDEST COUNTRY.

SHOWS AND  
EVENTS FOR  
ALL AGES

INTREPID THEATRE PRESENTS

# WINTERERLAND

**JANUARY 25 - FEBRUARY 1** METRO STUDIO | INTREPID THEATRE CLUB | THE HQ  
SITE-SPECIFIC | TICKETS AVAILABLE AT [TICKETROCKET.ORG](http://TICKETROCKET.ORG) OR CALL 250.590.6291

# SIN CITY

**KINGDOM OF THRONES**

**hilarious improvised theatre**

8pm Tuesdays  
Jan 7 - April 29 Victoria Event Centre

[sincityimprov.com](http://sincityimprov.com)

## TOES 'N' TAPS DANCE SHOPPE

**Follow Us On Facebook  
For Contests & More!**

1733 Cook St. (250) 480-0017

## Theatre Team

Theatre Manager  
Box Office Supervisor  
Facilities Maintenance  
Technical Director  
House Manager  
Head Carpenter  
Costume Manager  
Properties  
Newsletter  
Arts Coordinator  
Program Coordinator  
Custodians  
Photographer

Denise Brown  
Dick Newson  
Dick Newson  
Alan MacKenzie  
Emma Morgan-Thorp  
Doug Anderson  
Ned Lemley  
Sally Crickman, Jean deCartier  
Corinna Gilliland  
Jeani Reynolds  
Linda Billings  
Angela Winteler, Tanya Towns  
(T&A's Cleaning)  
David Lowes

Admin/Box Office 250-384-2142

Costume Loft 250-384-2025

Mailing Address

805 Langham Court

Victoria, B.C. V8V 4J3

email: [boxoffice@langhamtheatre.ca](mailto:boxoffice@langhamtheatre.ca)

[www.langhamtheatre.ca](http://www.langhamtheatre.ca)

Charitable donation number: 11928 5294 RR001

## Victoria Theatre Guild

*The Victoria Theatre Guild and Dramatic School thanks the following individuals and sponsors for generously supporting the 2013-2014 Season!*

### BENEFACTORS

(\$50,000 +)

Jack Droy

### DESIGNERS

(\$1,000 - \$4,999)

City of Victoria

Keith Digby

The Estate of Jack Droy

### STAGE MANAGERS

(\$400 - \$999)

Brenda Kosaka

Daphne Massey

Ann Wurltizer

Carmen & Ed Pitcher

### LEADING ACTORS

(\$100 - \$399)

David Anderson

Gordon Alexander

Kenneth Austin

Glenn Boughton

Sherry Butler

Adelle Clements

Don Cooper

Ronald Cox

Patricia Davey

Annie Davison

Annetta Delacretaz

Charles Dool

Robert Durie

Sandy Hook

Shirley Gray

Fay Husband

Mary Ann Jackson

Nan Long

Bruce MacKenzie

Frank McGilly

Diane McLaren

Victor Neufeldt

Elizabeth Riehm

Jon Scheer

Greta Shaya

Dale Shortliffe

Elisabeth Silvester

Suzanne Stewart

Michael Tyler

Barbara Waldner

Derek Whittle

Jean Wright

Our gratitude to the  
30 'Supporting Players'  
(up to \$99)

### MEDIA SPONSORS



FOCUS

### TELEVISION MEDIA SPONSOR



Vancouver Island

### RADIO MEDIA SPONSORS



### BUSINESSES



VICTORIA  
FOUNDATION

island  
office equipment ltd.

The Victoria Guild & Dramatic School gratefully acknowledges the financial support of the Province of British Columbia Gaming Policy and Enforcement Branch.

The Victoria Theatre Guild has been offering quality community theatre for 85 seasons. It has not only benefited from the time and talents of the artists but also the generosity of others. This list represents those who have financially contributed this season. If you would like to help us to continue bringing quality live theatre to the community, please contact Denise Brown, Theatre Manager, at 250.384.2142.

Langham Court Theatre thanks the following non-profits that are a part of our 2013-2014 Season:

Community Arts Council of Greater Victoria  
Victoria Cool Aid Society  
Victoria High Improv  
Friends of the Greater Victoria Public Library  
Philanthropic Education Organization

[cacgv.ca](http://cacgv.ca)  
[coolaid.org](http://coolaid.org)  
[vichighimprov.blogspot.ca](http://vichighimprov.blogspot.ca)  
[gvpilfriends.ca](http://gvpilfriends.ca)

# PIZZERIA PRIMA STRADA

pizzeriaprimastrada.com

follow us on:

facebook, twitter,  
instagram and  
pinterest



Certified Authentic by Verace Pizza Napoletana

2960 Bridge St  
250.590.4380

230 Cook St  
250.590.8595



ASSOCIAZIONE  
**VERACE  
PIZZA  
NAPOLETANA**

**CELEBRATING OUR 2013/14 SEASON**



## ST. LUKE'S PLAYERS

*presents a comedy/drama*

# Welfarewell

*by Cat Delaney / Directed by Michael King*

**Opening  
Night  
is 2 for 1**



**EVENING Performances**

at 8:00 p.m. on

March 12, 13, 14, 15, 19, 20, 21 & 22

**MATINEE Performances**

at 2:00 p.m. on

March 15, 16, 22 & 23

Tickets: Adults \$15

Seniors & Students \$13

Available at the door or:

- Ivy's Book Shop - 2188 Oak Bay Ave
- Petals Plus Florist - 3749 Shelbourne St
- Russell Books - 734 Fort St
- Dig This - 480, 777 Royal Oak Drive



Winner of the 2009 Samuel French Canadian Playwriting Competition.

St Luke's Hall • 3821 Cedar Hill X Rd, at Cedar Hill Rd, Victoria  
Information: 250.884.5484 • [www.stlukesplayers.org](http://www.stlukesplayers.org)

BACK BY POPULAR DEMAND!

# BUDDY THE BUDDY HOLLY STORY



Written by

Alan Janes

Featuring

Zachary Stevenson

Theatre Getaway Packages

Playbill Dining Room  
completely renovated

The Gallery Gift Shop

Feb 11 to Mar 8  
Rock 'n Roll Musical

Chemainus  
Theatre Festival

1.800.565.7738

[chemainustheatre.ca](http://chemainustheatre.ca)

