

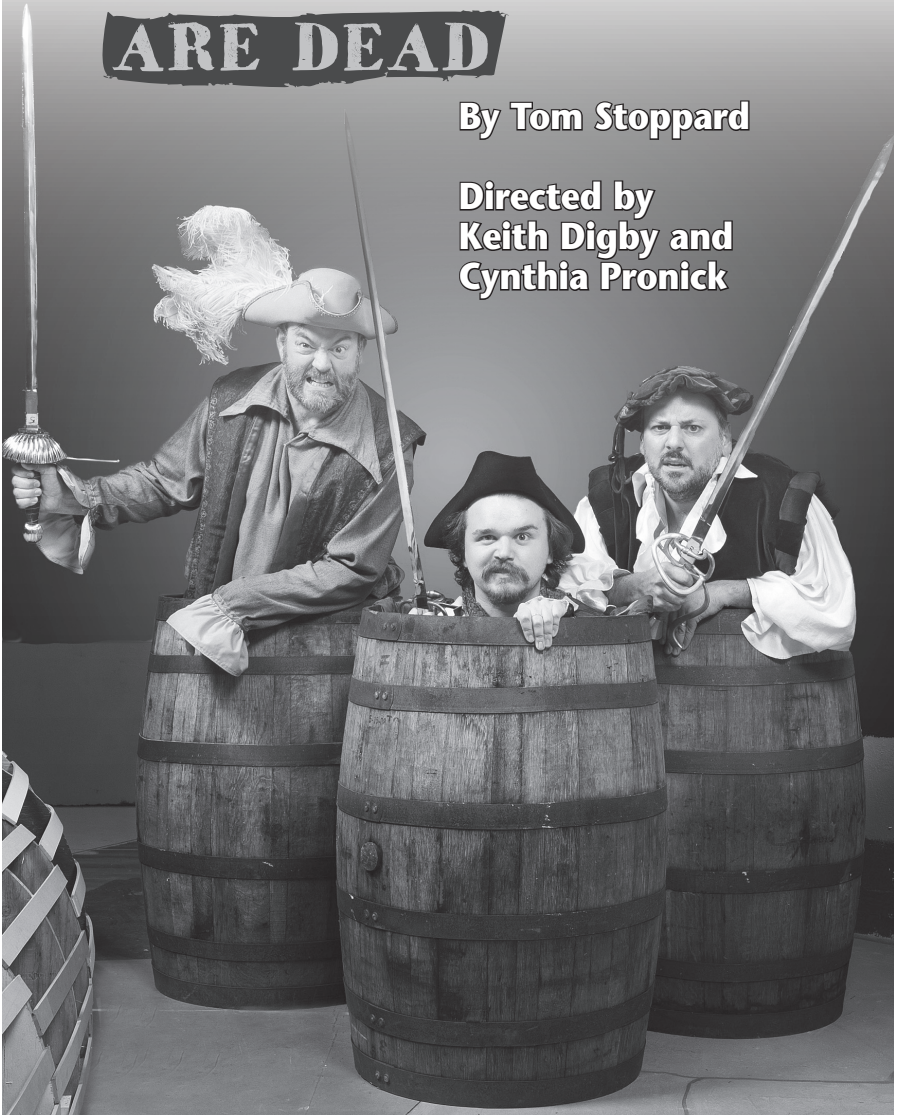
Langham Court Theatre

presents

# Rosencrantz & Guildenstern **ARE DEAD**

By Tom Stoppard

Directed by  
Keith Digby and  
Cynthia Pronick



**June 11 - 28, 2014**

**Alma de España Flamenco  
Dance Company  
& School presents**

# *Pasajes*



**An all-star lineup  
of 6 flamenco artists  
direct from Spain**

**Join local artists  
Veronica Maguire  
Gareth Owen  
Jo Ann C. Dalisay  
Mieka Michaux  
Garth Martens...  
with a special presentation  
by Alma de España**

**JULY 12<sup>TH</sup>, 2014  
ROYAL THEATRE  
VICTORIA, BC  
8pm doors 7:30 pm  
ONE SHOW ONLY!**

**Tickets: 250-386-6121 or 1-888-717-6121  
Info: [www.rmts.bc.ca](http://www.rmts.bc.ca) [www.pasajes.ca](http://www.pasajes.ca)**



## Directors' Notes

Tom Stoppard has been called “The greatest living English playwright,” and it’s not hard to see why. His heady mix of broad comedy, high theatricality and mercurial intellectual jousting is instantly compelling and consistently delightful. *Rosencrantz and Guildenstern are Dead*, where two minor characters from Hamlet are elevated to lead roles, is a fine exemplar of this. For directors and actors, mind you, it is a very challenging piece. Balancing the need for allowing humour full rein, with delving the depths of themes such as ‘reality and illusion’ and the blurred edges of personal identity, (which reflects Stoppard’s personal feelings as a ‘displaced person’) makes producing R & G one of the tougher tasks in theatre. Fortunately, we directors have been blessed with a talented, willing and buoyant cast, and a crew both professional in approach and full of their own perceptive ideas. Our inventive design crew complete a company that has been a joy to work with. We hope that you, the audience, find this production as richly rewarding to experience as it has been to create.

Keith Digby and Cynthia Pronick

Langham Court Theatre  
presents  
**Rosencrantz & Guildenstern  
Are Dead**

by Tom Stoppard

June 11 – 28, 2014

*Rosencrantz and Guildenstern Are Dead* is presented by special arrangement  
with SAMUEL FRENCH INC.

Directors	<b>KEITH DIGBY, CYNTHIA PRONICK</b>
Producers	<b>GIL and ANGELA HENRY</b>
Stage Manager	<b>SYLVIA LINDSTROM</b>
Asst. Stage Managers	<b>FINN ARCHINUK, LEIGH ROBINSON</b>
Set Design	<b>BILL ADAMS</b>
Lighting Design	<b>KARRIE AYOTTE, PAUL HILTON</b>
Sound/Projections Design	<b>KEVIN STINSON</b>
Costume Design	<b>PEARL ARDEN</b>
Properties/Set Decor	<b>JOYCE KLINE</b>
Music	<b>BLOOD, LOVE &amp; RHETORIC</b>

Cast

Rosencrantz	<b>ALEX JUDD</b>
Guildenstern	<b>RICK RODRIGUES</b>
The Player	<b>JASON STEVENS</b>
Alfred	<b>CHASE ARDEN and FINNBHAR MCLAREN</b>
Tragedians	<b>BOBBY CLEVELAND, JAY FEDORAK, TONY CAIN, TRAVIS WILSON</b>
Hamlet	<b>NICHOLAS GUERREIRO</b>
Ophelia	<b>MICHELLE MITCHELL</b>
Claudius	<b>ROGER CARR</b>
Gertrude	<b>WENDY MAGAHAY</b>
Polonius	<b>KEVIN STINSON</b>
Soldier	<b>BOBBY CLEVELAND</b>
Ambassador	<b>TONY CAIN</b>
Horatio	<b>JAY FEDORAK</b>
Attendants	<b>LEIGH ROBINSON, CATRIONA BLACK, FINN ARCHINUK, MICHAEL GOSSELIN, BRYCE KNUDTSON</b>

Scene Breakdown and Setting

**ACT I**

Between one place and another at a third place of no name, character, population or significance.  
Elsinore Castle, Denmark

**Intermission**

**ACT II**

Elsinore Castle, Denmark  
At sea

## Production Team

Head Scenic Carpenter Set Construction	<b>BILL ADAMS</b> MIKE KUSS, CHARLEY ENCELL, JULIUS MASLOVAT, BILL ADAMS, TOM HOLDER, GORDON ALEXANDER, DAVE BURBANK
Set Painters	JOHN SMITH, DAVE BURBANK, GIL HENRY
Costume Mistress	PEARL ARDEN
Costume Assistants	LYNN CADRAIN, JEAN deCARTIER, ROSEMARY HENRY, ERICA THOMAS, ERIKA SCHWEITZER, ANNE-MARIE ARNESON
Stage Crew	LEIGH ROBINSON, FINN ARCHINUK, MICHAEL GOSSELIN, BRYCE KNUDTSON, CATRIONA BLACK
Lighting Board Operators	MICHAEL GOSSELIN, DANI RECALMA
Lighting Crew	PAUL HILTON, AL MACKENZIE, MICHAEL GOSSELIN, MICHAEL ROMANO, PERRY BURTON, COLIN HOPCRAFT, FINN ARCHINUK, KARRIE AYOTTE
Sound Operators	AMANDA HEFFELFINGER, TIMOTHY WATTERS
Shadow Stage Manager	ROSEMARY JEFFERY
Prompter	ROSEMARY JEFFERY

---

Theatre Manager	<b>Denise Brown</b>
Box Office Supervisor	<b>Dick Newson</b>
Facilities Maintenance	<b>Dick Newson</b>
Technical Director	<b>Alan MacKenzie</b>
House Manager	<b>Emma Morgan-Thorp</b>
Head Carpenter	<b>Bill Adams</b>
Costume Manager	<b>Ned Lemley</b>
Properties	<b>Sally Crickman, Jean deCartier</b>
Newsletter	<b>Corinna Gilliland</b>
Arts Coordinator	<b>Jeani Reynolds</b>
Program Coordinator	<b>Linda Billings</b>
Custodians	<b>Angela Winteler, Tanya Towns</b> (T&A's Cleaning)
Photographer	<b>David Lowes</b>

## Theatre Team

Admin/Box Office 250-384-2142  
Costume Loft 250-384-2025  
Mailing Address  
805 Langham Court  
Victoria, B.C. V8V 4J3  
email: [boxoffice@langhamtheatre.ca](mailto:boxoffice@langhamtheatre.ca)  
[www.langhamtheatre.ca](http://www.langhamtheatre.ca)  
Charitable donation number: 11928 5294 RR001

## Acknowledgements

Lisa Leighton, Rosemary Henry, Capital Iron, Robin Evans, Victoria College of Art, Disguise the Limit, Juli Steemson at Rad Juli, The Papyery.

***Please refrain from using perfume/cologne when attending a performance.  
Some of our patrons are highly allergic to certain scents. Thank you.***

Programme Advertising, Design and Production



P.O. Box 8629 • Victoria V8W 3S2 • 250.480.3206  
Publishers **Philomena Hanson/Paul Hanson** • Design/Production **Lyn Quan**  
Email: [vicarts@vicarts.com](mailto:vicarts@vicarts.com) [www.vicarts.com](http://www.vicarts.com)



**KEITH DIGBY** *Director*

Keith divided his working life between professional theatre and teaching. He directed for major theatres across Canada, including The Citadel Theatre, Edmonton, Bastion Theatre, Victoria, Vancouver Playhouse and at Stratford Festival, Ontario. Keith taught English, English literature and theatre at Brentwood College School where he was Director of Arts. He now writes screenplays and teaches screenwriting. For Langham Court, Keith and Cynthia have co-directed a half-dozen plays, starting in 1996 with another Tom Stoppard piece: *Arcadia*.

## Production Biographies

**CYNTHIA PRONICK** *Director*

Cynthia has been active in theatre for over 30 years, both onstage and backstage. Co-directing with Keith at Langham Court Theatre began with *Arcadia* in 1996, and Cynthia is excited about returning to Stoppard with *Rosencrantz & Guildenstern Are Dead*. Cynthia and Keith's collaborative directing efforts have included *The Dining Room*, *Racing Demon*, *Pack of Lies*, *The Lady in the Van* and *The 39 Steps*. Her favourite onstage memories include playing Eliza Doolittle in *Pygmalion*, Annie in *The Real Thing* (also Stoppard), and Betty Meeks, a 75 year old Georgian woman in *The Foreigner* with Bard at Brentwood in 2010.



**PEARL ARDEN** *Costume Design*

Pearl can usually be found rummaging around in the costume loft making actors look good. Her costume assistant and set décor credits include *The Drowsy Chaperone*, *Lady Windermere's Fan*, *Cabaret*. Her acting credits include *Lady Windermere's Fan*, *Murdered to Death* and *Nana's Naughty Knickers*. It has been wonderful resurrecting period costumes with Cynthia.



**JOYCE KLINE** *Properties and Set Décor*

Joyce is delighted to again be part of Langham Court. An instructor at Victoria College of Art and a facilitator at Royal Roads University, Joyce's artwork has been exhibited across Canada and Finland. Her plays have been produced at Vancouver TheatreSpace, the Vancouver Fringe Festival, and Toronto's Artword Centre, and workshoped at the Belfry, New Play Centre and Intrepid Theatre Club. She was a finalist in The Writers' Union of Canada's Writing for Children competition.



**SYLVIA LINDSTROM** *Stage Manager*

Sylvia is pleased to have the opportunity to once again work with Keith & Cynthia. She sends huge thanks to the fabulous crew, especially Finn and Leigh. Sylvia has been involved at Langham since 1986. Her stage management work includes *Pack of Lies*, *The History Boys*, *Silver Dagger*, *The Laramie Project*, *The Drowsy Chaperone*, *The 39 Steps* and *Cabaret*.



**FINN ARCHINUK** *Assistant Stage Manager*

This is Finn's second show with Langham, the first being *Cabaret* (2014). He is new to the area and brings a BA in Dramatic Arts from Brock University in Ontario. There he worked with several small theatre groups predominately on original shows as a lighting designer, set designer, stage manager, and/or technician. He will return to Langham as the lighting designer for *The Small Room at the Top of the Stairs* which opens in November.



**LEIGH ROBINSON** *Assistant Stage Manager*

This is Leigh's fourth production at Langham Court Theatre and her first as a co-assistant stage manager. She has also volunteered at St. Luke's Players. She is grateful to have worked with such an amazing cast and crew. Leigh would like to give a special thanks to her stage manager Sylvia Lindstrom for teaching her 'to know a hawk from a handsaw.'





**ANGELA AND GIL HENRY** *Producers*

This is Angela and Gil's second venture at co-producing. They saw *Rosencrantz & Guildenstern Are Dead* at UBC in 1969 when they were courting. It is a play that moved them greatly as they both slogged through literature degrees. They are delighted to be a part of this production with Keith and Cynthia and the remarkable cast and crew. Angela and Gil have been members at Langham for 40 years and have been involved in many productions as actor, director, producer, board member, scene painter and committee member. Angela is production chair for next season.

**KARRIE AYOTTE** *Lighting Design*

Largely stuck in an endless Vancouver trial thanks to her day-job, Karrie is grateful Paul was up for some creative collaboration. Getting to work on this fantastic production, with Keith, Cynthia and this dedicated crew and cast, is part of what's keeping her (mostly) sane. The other part is her amazingly supportive husband, Todd. Favourite designs include *Cabaret*, *39 Steps*, *Drowsy Chaperone*, *Laramie Project*, *Midsummer Night's Dream*, *Under Milkwood*. As always, in memory of phil.

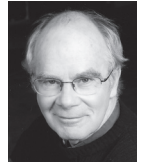


**PAUL HILTON** *Lighting Design*

What have you been doing? Designing with Karrie. What's that like? Amazing – creatively fulfilling! First time at Langham? Yes. Best lighting direction in the script? "The stage lightens disproportionately". Anyone to thank? Keith, Cynthia, production team, cast, crew, Rose (the love of my life), those who "delve" into theatre. Favourite designs? *Jesus Christ Superstar*, *The Mikado*, *Philadelphia Here I Come*, *Lend Me A Tenor*, *Romeo and Juliet*. Any last words? Enjoy!

**BILL ADAMS** *Set Design*

Although the setting for *Rosencrantz & Guildenstern Are Dead* is wonderfully non-specific, most of Bill's sets have been a lot more realistic such as the moveable set for *Cabaret*, the stone Irish farmhouse in *Beauty Queen of Leenane*, the bookstore at *84 Charing Cross Road*, the Tudor barn in *Elizabeth Rex*, and the Parisian street in *Jacques Brel*. Besides designing and building sets, Bill wrote the one-act play, *Red Herring* that has been selected to represent Langham in this year's Fringe Festival.



**KEVIN STINSON** *Sound and Projections Design*

Kevin would like to "thank" Keith and Cynthia for his biggest challenge yet in sound and projection design. He previously designed sound at Langham Court for *The Penelopiad*, *Better Living*, *The 39 Steps*, *1959 Pink Thunderbird Convertible*, *That Summer* and *Blithe Spirit*. He also designed sound for Theatre Inconnu's productions of *In the Next Room* and *Kafka the Musical*. And if you need help with your Mac he's your friendly neighbourhood Mac Geek 4 Hire.

**The poets of printing  
are "alive and well"  
at**



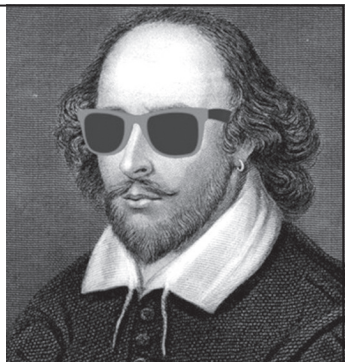
**Hillside Printing**

Educate. Inform. Entice. Inspire.

3050 Nanaimo Street, Victoria, BC

Ph: (250) 386-5542 • Fx: (250) 386-7838

sales@hillsideprinting.com www.hillsideprinting.com



## About the Playwright



### Tom Stoppard

Along with fellow Eastern European, Joseph Conrad, Tom Stoppard is one of the great practitioners of English for whom English is a second language. He was born Tomas Straussler on July 3, 1937 in Czechoslovakia. In 1941, Stoppard and his family fled their homeland and became refugees in India. When his father died and his mother remarried Kenneth Stoppard, a British Army Major, the family moved to England.

At seventeen, Stoppard left school and began to work for a local newspaper, where his wit and writing talent were immediately recognized and he was quickly promoted to theatre critic. His career as a playwright began at twenty-three when he gave up his job as a journalist and wrote his first play, *A Walk on the Water*, which was televised in 1963. Stoppard originally wrote *Rosencrantz and Guildenstern Are Dead* in verse but transformed his lines into prose in order to contrast with Shakespeare's text. The play was an immediate critical success, and won the Tony Award for best play, as well as the New York Drama Critics Award.

Stoppard went on to write over twenty more plays including *Jumpers* (1972), *Travesties* (1974), *Enter a Free Man* (1974), *The Real Thing* (1982), *Arcadia* (1993), *Indian Ink* (1995), *The Invention of Love* (1997), and *The Coast of Utopia* (2002). Stoppard also had great success with his screenplays - most notably his collaboration with Marc Norman in *Shakespeare in Love* (1992) and the film version of *Rosencrantz and Guildenstern Are Dead* (1991). Intriguingly, according to Steven Spielberg, although he is uncredited, almost all the dialogue in *Indiana Jones* and the *Last Crusade* was written by Stoppard!



*Thank You to  
Langham Court Theatre  
for staging an  
exhilarating 85th season*

**Carole James, MLA**

Victoria-Beacon Hill  
Community Office  
1084 Fort Street

tel: 250.952.4211  
carole.james.mla@leg.bc.ca  
www.carolejamesmla.ca

**P R E S T I G E**  
P I C T U R E F R A M I N G E T C E T E R A

OVER 30 YEARS IN VICTORIA AT 2002 OAK BAY AVENUE  
250-592-7115 • [www.prestigepictureframing.ca](http://www.prestigepictureframing.ca)

Enhance and upgrade your present or newly acquired art work  
to current conservation standards and design concepts.





Cast and Crew of *Rosencrantz & Guildenstern Are Dead*

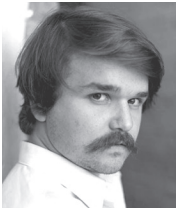
blue bridge AT THE  
**ROXY**  
PRESENTS  
**JUDY!**  
THE  
LIFE STORY OF  
JUDY GARLAND

by Paul Ledoux  
Starring Sara-Jeanne Hosie

JULY 15TH - 27TH, 2014  
AT THE ROXY THEATRE



**TICKET ROCKET**  *Order your tickets today at Ticket Rocket*  
250.590.6291 | [TICKETROCKET.ORG](http://TICKETROCKET.ORG)



**ALEX JUDD** *Rosencrantz*

Alex is excited to be on stage for his second time with Langham Court, previously performing in *The Graduate*. He recently appeared in *Annie* with VOS & *Marat Sade* with Scrumpty Productions. And you can soon see him in the upcoming season of Victoria Shakespeare Society. Enjoy the show!

**RICK RODRIGUES** *Guildenstern*

Although new to Langham Court, Rick has taken to the stage over the years in Bard@Brentwood production: *As You Like It* (Touchstone), *Midsummer Night's Dream* (Bottom), *Much Ado About Nothing* (Dogberry), and most recently in the title role of the *The Foreigner*. An educator at Brentwood College in Mill Bay by trade, Rick has also slipped in when called in cameo roles in school musical productions, most recently in *Fiddler On The Roof*.



## Cast Biographies

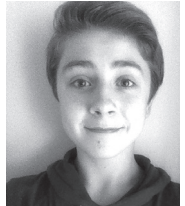


**JASON STEVENS** *The Player*

Jason received his training at The Drama Centre London and has performed in both London and New York. Past shows include *Not About Heroes*, *Let us Now Praise Famous Men*, *Racine's Britannicus*, *The Dutch Courtesan*, *Titus Andronicus*, numerous roles in *Antigone* a play he also directed for Chashama Theatre Co. in Times Square. Jason has also featured in numerous commercials and voiceovers. Jason teaches at The Victoria Academy of Dramatic Arts and the Pacific Film and New Media Academy.

**CHASE ARDEN** *Alfred*

Chase was last seen on the Langham Court stage as a Hitler youth in *Cabaret*. He is a grade 9 student at Dunsmuir Middle School. He is currently involved in a production of *Anne Of Green Gables* with Four Seasons Musical Theatre. He also takes Jazz, Hip-hop, Ballet and Tap at Stages Performing Arts School. Chase loves being in the theatre community and is excited to be back at Langham Court.

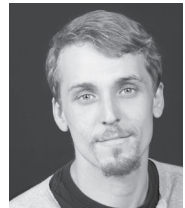


**FINNBHAR MCLAREN** *Alfred*

Finnbhar is a ninth grade student attending Victoria High School. He has loved acting from a very young age. He first played a part in *The Sound of Music* at age six and has since been part of the cast for three professional plays and played various parts in over ten small productions. Finnbhar is very excited to be with such a great theatre company and hopes you will enjoy the show.

**BOBBY CLEVELAND** *Tragedian/Soldier*

Bobby studied Theatre Arts at Algonquin College in Ottawa. Having spent the past few years focused on acting for the camera, he is thrilled to be returning to stage work. He was recently seen as Doug in *Così* at Puente Theatre's Wordplay 2014. Bobby is very excited to make his first appearance on the Langham Court stage and would like to thank everyone involved.



**JAY FEDORAK** *Tragedian/Horatio*

Jay is thrilled to be making his acting debut in a play written by both of his favourite playwrights: Stoppard and Shakespeare. Jay was ASM for Langham's production of *Arcadia* and is delighted to be reunited with Keith, Cynthia and Roger in this production.



**TONY CAIN** *Tragedian/Ambassador*

Tony is pleased to be working with Keith and Cynthia again. Previously appeared in Langham's production of *Lady In The Van* as Alan Bennett. Recently played Web in *Firewall* at The Belfry Spark Festival. Directing credits; *The Melville Boys* at Langham. *Casting for Murder* at St Lukes .Tony will be in the director's chair again next season for Langham's production of *People* . He is presently the artistic director for Target Theatre. Trained at Drama Centre London.

**TRAVIS WILSON** *Tragedian*

Travis is looking forward to his first appearance on the Langham Court stage. Preparing for the show has been a wonderful experience, and he would like to thank the directors, cast and crew for all their guidance and patience. He would also like to thank his wife, Becca, for all her love and support (...and patience).



**NICHOLAS GUERREIRO** *Hamlet*

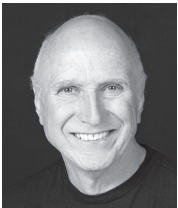
Nicholas is thrilled to be playing every actor's dream role (albeit in a different play) in his first appearance on the Langham Court stage. Recent credits include the Old Woman in *Amelia and the Dwarfs* (SATCo 2013) and two years as an actor and writer with the Belfry 101 program. Nicholas is entering his second year in the departments of theatre and writing at the University of Victoria.

**MICHELLE MITCHELL** *Ophelia*

Michelle is excited to be back on the Langham stage for the third time this season. Langham credits include Stripper (*The Graduate*), Myrtle Mae (*Harvey*), Mary Ann (*Better Living*), Bear (*Elizabeth Rex*) and Zubaida Ula (*The Laramie Project*) in addition to roles with St. Lukes Players, Peninsula Players, Four Seasons Musical Theatre and Kaleidoscope Theatre. Many thanks to her husband for his continued support in so many ways, and to the entire cast and crew.



**Cast Biographies**



**ROGER CARR** *Claudius*

Recent acting includes *84 Charing Cross Road*, *Lady In The Van*, and *Shadowlands*. Recent directing includes *Cabaret*, *Miss Saigon*, *The Drowsy Chaperone* and *Sweeney Todd*. Next season Roger will be directing *The Mystery of Edwin Drood*. It's delightful to have the opportunity to mesh Shakespeare and Tom Stoppard, two giants.

**WENDY MAGAHAY** *Gertrude*

Active at Langham since 2000, Wendy appeared in last season's markedly different *Lady Windermere's Fan* (Mrs. Eryllyne) and *Calendar Girls* (the one with the buns). It is a pleasure to be working with Keith and Cynthia again (*Pack of Lies*) and to inhabit a small but regal corner of this production among such a talented cast and crew.



**KEVIN STINSON** *Polonius*

Kevin is very happy to be appearing in his 10th show and first Shakespearian character at Langham Court. Favourite onstage appearances here include *Harvey*, *Money and Friends*, *A Flea In Her Ear*, *The Laramie Project* and *Elizabeth Rex*. Other favourite roles from Shakespeare were *Falstaff* and a certain Porter. His all-time favourite Langham experience was getting married on stage here. His alter-ego also has fun helping Mac users solve their computer problems.

President	Luke Krayenhoff
Past President	Toshik Bukowiecki
Vice-President	Karrie Ayotte
Treasurer	Andrew Lee
Secretary	Andrea Pite
Production Chair 2013-14	Odile Nelson
Production Chair 2014-15	Angela Henry
Members at Large	Montgomery Bjornson
	Michael Miller
	Vinnie Chadwick
	Rosemary Henry

## Board of Directors

Bill Adams  
 Jim Boardman  
 John Britt

### Life Members

Toshik Bukowiecki  
 Ginny Carter  
 Roger Carr  
 Michael Chadwick

Vinnie Chadwick  
 Antoinette Church  
 Elsie Farr  
 John Fear  
 Phyllis Gaskell  
 Corinna Gilliland  
 Barry Grimshaw  
 Jill Groves  
 Kai Hansen  
 Peta Heald  
 Angela Henry

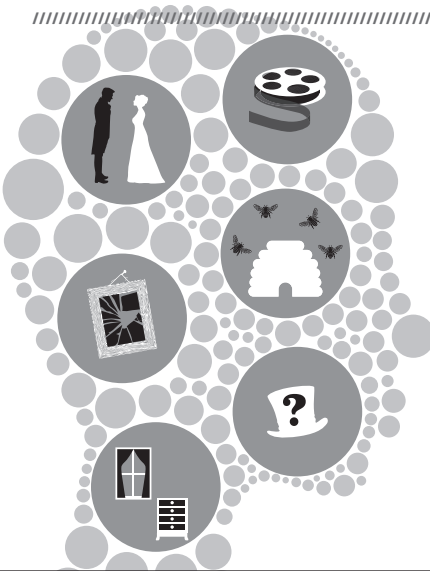
Gil Henry  
 Ned Lemley  
 Sylvia Lindstrom  
 Nan Long  
 Alan MacKenzie  
 Peta MacKenzie  
 Thomas Mayne  
 Judith McDowell  
 Dick Newson  
 Sylvia Rhodes

Drew Shand  
 Paul Terry  
 Graham Thomson  
 Jean Topham  
 Judy Treloar  
 Michael Tyler  
 Rick Underwood  
 Barb Waldner  
 Jutta Woodland  
 Brian Woodman

2014-2015 SEASON

BUY A SUBSCRIPTION OR FLEX PASS  
**SAVE OVER 15%**

**LANGHAM**  
 ★ COURT ★  
**THEATRE** **86**  
 SEASONS



**PRIDE & PREJUDICE**  
 OCT 1 – 18  
**THE SMALL ROOM AT  
 THE TOP OF THE STAIRS**  
 NOV 19 – DEC 6  
**PEOPLE**  
 JAN 14 – 31  
**THE MYSTERY OF  
 EDWIN DROOD**  
 MAR 4 – 21  
**AUGUST:  
 OSAGE COUNTY**  
 APR 22 – MAY 9  
**HUMBLE BOY**  
 JUN 10 – 27

**250.384.2142**  
[langhamtheatre.ca](http://langhamtheatre.ca)

## Art Exhibition

### KEN HORN

The Arist

[www.kenhornart.com](http://www.kenhornart.com)

Ken Horn was born in Scotland, studied art in Sweden, and at Croydon Art College in England before coming to Canada in 1975 where he spent a year studying art conservation in Ontario.

Initially working in black and white Celtic designs, he has since spent a season or two working in clay but from about 1997 to the present finds him concentrating mainly on the use of acrylics.

Kens works are often accompanied by poems which he writes.



July  
24 to  
Aug  
02

2 for \$20  
Preview Night  
July 23

LANGHAM  
★ COURT ★  
THEATRE

Box Office + Info 250-384-2142  
805 Langham Court (off Rockland)

[www.langhamtheatre.ca](http://www.langhamtheatre.ca)



2014 | 2015

## Subscribe & Save!

4 PLAYS FOR ONLY \$48  
OR 3 FOR \$36

### The Lion, the Witch, and the Wardrobe

OCT. 9–18, 2014

SPOTLIGHT ON ALUMNI

Adapted from C.S. Lewis novel  
with Kaitlin Williams (BFA '09)  
& Mack Gordon (BFA '08)

### A Midsummer Night's Dream

NOV. 6–22, 2014

By William Shakespeare  
Directed by Fran Gebhard

### Lion in the Streets

FEB. 12–21, 2015

By Judith Thompson  
Directed by Conrad Alexandrowicz

### Amadeus

MAR. 12–21, 2015

By Peter Shaffer  
Directed by Chari Arespacochaga



250.721.8000 | [phoenixtheatres.ca](http://phoenixtheatres.ca)

# Victoria Theatre Guild

*The Victoria Theatre Guild and Dramatic School thanks the following individuals and sponsors for generously supporting the 2013-2014 Season!*

## BENEFACTORS

(\$50,000 +)

Jack Droy

## DESIGNERS

(\$1,000 - \$4,999)

City of Victoria

Keith Digby

The Estate of Jack Droy

Wendy Merk

The Estate of Jane French

## STAGE MANAGERS

(\$400 - \$999)

Brenda Kosaka

Daphne Massey

Ann Wurlitzer

Carmen & Ed Pitcher

## LEADING ACTORS

(\$100 - \$399)

David Anderson

Gordon Alexander

Kenneth Austin

Glenn Boughton

Sherry Butler

Ginny Carter

Adelle Clements

Anne Cooper

Ronald Cox

Patricia Davey

Annie Davison

Charles Dool

Robert Durie

Charles Encell

Mary Goodspeed

Shirley Gray

Sandy Hook

Fay Husband

Mary Ann Jackson

Nan Long

Bruce MacKenzie

Frank McGilly

Diane McLaren

Victor Neufeldt

Elizabeth Riehm

Jon Scheer

Greta Shaya

Dale Shortliffe

Elizabeth Silvester

Suzanne Stewart

Michael Tyler

Barbara Waldner

Phyllis & Barrie Webster

Derek Whittle

Jean Wright

Anonymous

Our gratitude to the  
30 'Supporting Players'  
(up to \$99)

## MEDIA SPONSORS



FOCUS

## TELEVISION MEDIA SPONSOR



Vancouver Island

## RADIO MEDIA SPONSORS



## BUSINESSES



VICTORIA  
FOUNDATION

island  
office equipment ltd.

The Victoria Guild & Dramatic School gratefully acknowledges the financial support of the Province of British Columbia Gaming Policy and Enforcement Branch.

The Victoria Theatre Guild has been offering quality community theatre for 85 seasons. It has not only benefitted from the time and talents of the artists but also the generosity of others. This list represents those who have financially contributed this season. If you would like to help us to continue bringing quality live theatre to the community, please contact Denise Brown, Theatre Manager, at 250.384.2142.

Langham Court Theatre thanks the following non-profits that are a part of our 2013-2014 Season:

Community Arts Council of Greater Victoria  
Victoria Cool Aid Society  
Victoria High Improv  
Friends of the Greater Victoria Public Library  
Philanthropic Education Organization

cacgy.ca  
coolaid.org  
vichighimprov.blogspot.ca  
gvplfriends.ca  
peointernational.org

# PIZZERIA PRIMA STRADA

pizzeriaprimastrada.com

follow us on:

facebook, twitter,  
instagram and  
pinterest



Certified Authentic by Verace Pizza Napoletana

2960 Bridge St  
250.590.4380

230 Cook St  
250.590.8595



ASSOCIAZIONE  
**VERACE  
PIZZA  
NAPOLETANA**



# BARD ON THE BEACH | 25 YEARS

SHAKESPEARE FESTIVAL

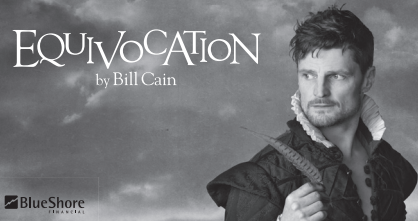
On Sale Now!  
Tickets from \$27

Season Sponsor **GOLDCORP**

BMO Mainstage



Studio Stage



June 11 to September 20 • Under the Tents in Vanier Park  
bardonthebeach.org or 604-739-0559

Media Sponsors

THE VANCOUVER SUN

Global BC

CKNW  
AM980

Chemainus Theatre Festival  
Presents  
A new production of  
BOUBLIL and SCHÖNBERG's

# Les Misérables

Luxurious Theatre Getaways

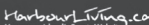
*theatre, accommodation in the  
Best Western Plus Chemainus Inn,  
dinner & breakfast  
starting at \$137\* per person*

June 20 to  
September 7

Chemainus  
Theatre Festival

1.800.565.7738

[chemainustheatre.ca](http://chemainustheatre.ca)



"Les Misérables is licensed by Music Theatre International (MTI) By arrangement with CAMERON MACKINTOSH LTD."