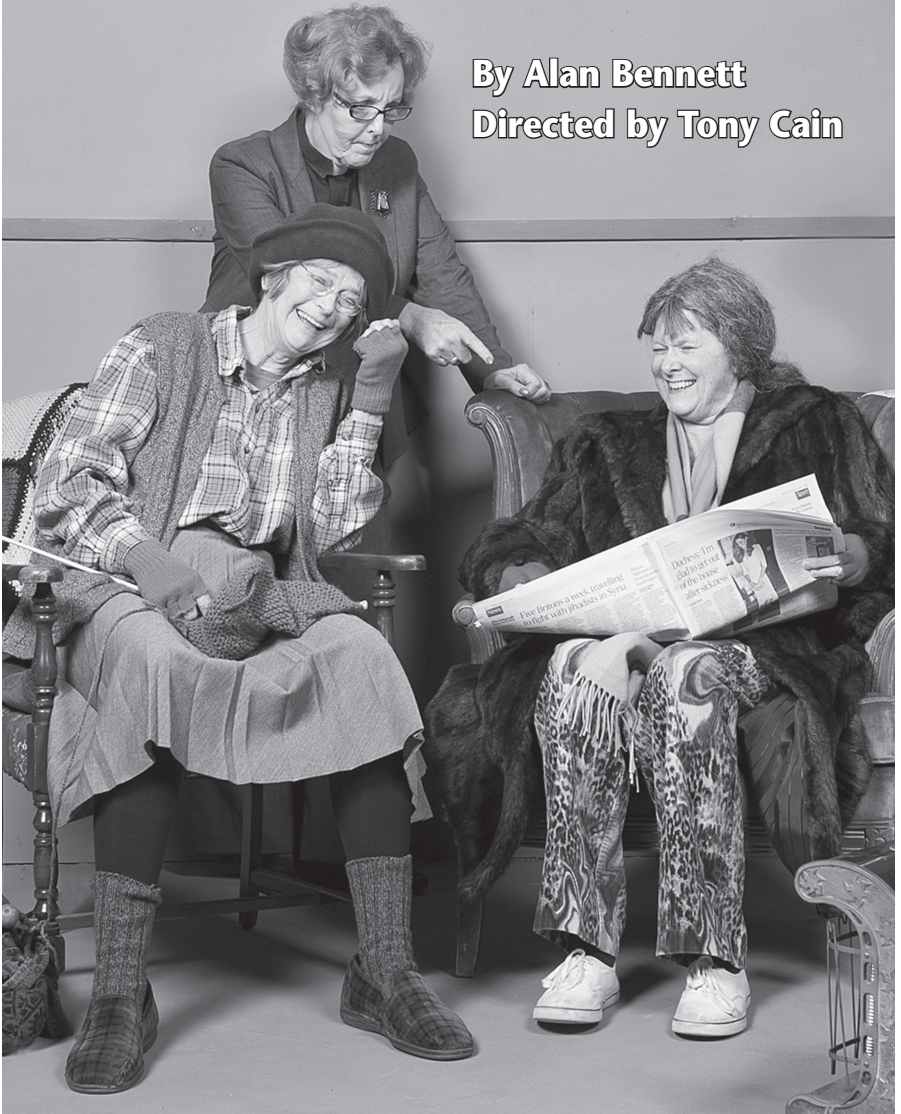


Langham Court Theatre

presents

# PEOPLE

By Alan Bennett  
Directed by Tony Cain



January 15 - 31, 2015



## Glorious Gershwin

JANUARY 22, 2 PM,  
JANUARY 23 & 24, 8 PM  
ROYAL THEATRE

**Brian Jackson, conductor**  
**Ian Parker, piano**

Get wrapped up in the rhythms and melodies of the legendary George Gershwin! Magnetic pianist Ian Parker returns to perform classic Gershwin tunes, including the famous "Rhapsody in Blue." Conducted by our beloved Brian Jackson.

# COMING SOON

CALL TODAY!  
250.385.6515

VICTORIASYMPHONY.CA



VICTORIA  
SYMPHONY

Tania Miller, Music Director

SERIES SPONSOR

revera®  
Retirement Living

PEARSON  
UWC

CELEBRATING 40 YEARS  
1974-2014

160 STUDENTS FROM 80 COUNTRIES PERFORM

# ONE WORLD 2015

A CELEBRATION OF DIVERSITY THROUGH  
music, stories and dance  
SATURDAY MARCH 7TH 2015, 2PM & 8PM



ADULTS \$35 SENIORS & STUDENTS \$20 CHILDREN \$15 (12 AND UNDER)

Tickets available at The Royal Box Office.

Charge by phone at 250.386.6121 or toll free 1.888.717.6121 or [www.rmts.bc.ca/events/one-world-2015-royal-theatre](http://www.rmts.bc.ca/events/one-world-2015-royal-theatre)

## Directors' Notes

In *People* two worlds collide: that of Margaret Thatcher, "If it is worthwhile it has to be paid for. Everything has a price. If it doesn't have a price, it doesn't have a value" versus pre-Margaret Thatcher, a world in which health care, education and social safety nets were simply there – taken for granted.

Lady Dorothy, fallen on hard times, is desperate to keep her dilapidated mansion from falling into the hands of The National Trust and reflects sadly, "Decay is a kind of progress," a view in direct opposition to that of her sister, June, a hard-nosed, pro-Thatcher, Archdeacon. And where does Iris, the third member of the trio fit in? Absorbed in knitting for "the troops" (because there's always a war, somewhere) nothing gets past her. Lady Dorothy, reflects the view of *People* playwright, Alan Bennett, when she argues that things survive because we DO take them for granted. Bennett's view is that true history IS the crumbling decay of antiquity and that historic monuments like Stonehenge, the Acropolis, or indeed, any ancient site, are NOT to be tatted-up and turned into money-raising ventures that effectively murder the spirit of the place. Bennett argues that there ARE things such as state sponsored health, education, employment, and welfare that SHOULD be taken for granted, that he himself, pre-Thatcher, had been given a State scholarship to study history at Oxford, and his father had received first rate care from a health service that, today, has to be paid for. Born near Liverpool, in Lancashire, the county that borders Bennett's birthplace of Leeds, West Yorkshire, I strongly identify with his language and characters. I, too, received a State scholarship, in my case, to study drama. Some years back, I directed three of Bennett's one act plays from the *Talking Heads* series for the Edmonton Fringe. More recently, here at Langham, I played the role of Alan Bennett himself in *Lady in the Van*. I chose *People* for its undertones of the new world order, an order that includes offshore tax havens for large corporations (taxes that should be supporting social services) and the agenda of the right.

Bennett admits to being irritated when visiting a house taken over by The National Trust. His unease stems from The Trust's corporate ideology of marketing England's heritage as a product for profit, the houses transformed from the ancient and romantic, restored and remodeled in the 19th century. Presentations have become carnival events peddling plastic trinkets, candy floss and walnut cake (a 16th century recipe of course) because, according to Ralph Lumsden, with whom June allies herself, "that is what the visitors want."

The National Trust UK was established in 1895 as a charitable organization. It owns and operates more than 300 historic buildings, as well as working pubs and inns, dozens of ancient sites – even a goldmine. The Trust has a membership of 4 million people who, for the privilege, donate up to 50 English pounds each per annum, while 60,000 volunteers donate their time – nearly 4-million hours annually.

(One of my biggest challenges in staging *People* involves the film scene for which I needed props and equipment for a film crew. Thanks to CHEK News for lending me a real camera and to Jean de Cartier, our props person, who scouted around town collecting authentic film gear. I had two local film makers, Brian Globus and Dan Martin, sit in on rehearsals choreographing the correct movement of lights and reflectors, cameras and monitors. And I won't even go into chamber pots – to fill or not to fill – Balenciaga or Hardy Amies – and the dynamic transformation scene. What I WILL say is that with a dedicated cast and crew, it is amazing what can be overcome.)

Bevan, the honest auctioneer in the play, sings the praises of solitude with his "PST" – People Spoil Things – but all of the people involved with *People* are delighted that you people are here. We hope you enjoy our performance of *People*.

Tony Cain

Langham Court Theatre  
presents

# People

By Alan Bennett

January 15 - 31, 2015

Langham Court Theatre - Home of the Victoria Theatre Guild & Dramatic School  
*People* was first performed in the Lyttelton auditorium of the National Theatre, London,  
on 31 October 2012. Produced by special arrangement with United Agents Ltd.

|                          |  |
|--------------------------|--|
| Director                 | <b>TONY CAIN</b>   |
| Assistant to Director    | <b>TERRY OLIVER</b>  |
| Producers                | <b>MICHAEL GOSSELIN, SYLVIA RHODES</b>   |
| Stage Manager            | <b>SHEILA MCKENZIE</b>   |
| Asst. Stage Managers     | <b>PENNY PINCHER, MICHAEL GOSSELIN,<br/>VICTORIA STARK, ROWAN HEBERT,<br/>BRYCE KNUDTSON</b> |
| Set Designer             | <b>ANNE SWANNELL</b>   |
| Properties               | <b>JEAN DE CARTIER</b>   |
| Lighting Designer        | <b>ANASTASIA SCHWARZE</b>  |
| Costume Design           | <b>DIANA KEATING</b>   |
| Asst. Costume Design     | <b>HEATHER QUERENGESSER</b>  |
| Set Decor                | <b>JEAN DE CARTIER, ANNE SWANNELL</b>  |
| Paintings                | <b>ANNE SWANNELL</b>   |
| Sound Design             | <b>TIM WATTERS</b>   |
| Movement and Vocal Coach | <b>SUSAN WILKEY</b>  |

## Cast

|                   |                                  |
|-------------------|----------------------------------|
| Theodore          | <b>TOSHIK BUKOWIECKI</b>         |
| Dorothy Stacpoole | <b>ELIZABETH WHITMARSH</b>       |
| Bevan             | <b>JASON STEVENS</b>             |
| Iris              | <b>GELI BARTLETT</b>             |
| June Stacpoole    | <b>JAN STREADER</b>              |
| Ralph Lumsden     | <b>JOHN OWEN</b>                 |
| Bishop            | <b>PAUL BERTORELLI</b>           |
| Bruce             | <b>MALCOLM HARVEY</b>            |
| Louise            | <b>JENNIFER ELLE CANNON</b>      |
| Nigel             | <b>HENRY SKEY</b>                |
| Les               | <b>THOMAS HOLDER</b>             |
| Colin             | <b>BOBBY CLEVELAND</b>           |
| Brit              | <b>ROSALIE TREMBLAY-JOHNSTON</b> |
| Vicky             | <b>VICTORIA STARK</b>            |
| Jack              | <b>BRYCE KNUDTSON</b>            |

People Ensemble: Bobby Cleveland, Bryce Knudtson, Henry Skey, Jennifer Cannon,  
Malcolm Harvey, Paul Bertorelli, Rosalie Tremblay-Johnston,  
Thomas Holder, Victoria Stark, Colin Cleveland

Setting: A large room in an English country house.

Intermission: 20 minutes

The Play runs approximately 2 hours 30 minutes including intermission.

All performances are by a company of non-professional actors.

## Production Team

|                    |  |
|--------------------|--|
| Costume Assistants | IRENE DOERKSEN, ANNE SWANNELL, VICKY ATTWELL,<br>ALVA JENSON, LUCIE CAMPEAU, SUSAN HOULSON   |
| Props Assistants   | ANNE SWANNELL, ERICA THOMAS  |
| Set Painters       | ANNE SWANNELL  |
| Set Construction   | JOHN TAYLOR, JULIUS MASLOVAAT, MIKE KUSS,<br>GORDON ALEXANDER, BARRY GRIMSHAW,<br>DOUG CRAIG, CHARLEY ENCEL, ANDY SWAN,<br>JOHN C. SMITH |
| Lighting Operators | IRENE DOERKSEN, ANDREA PITE, MARNIE COULTER  |
| Lighting Crew      | MICHAEL GOSSELIN, PAUL HILTON, PERRY BURTON,<br>DAVID MEISEL, ANNIE LEPAGE, AVERY STEFANSON  |
| Sound Operators    | TIM WATTERS, AMANDA HEFFLEFINGER,<br>LARRY TAYLOR  |

---

|                        |                                |
|------------------------|--------------------------------|
| Theatre Manager        | Denise Brown                   |
| Facilities Maintenance | Dick Newson                    |
| Technical Director     | Alan MacKenzie                 |
| House Manager          | Karen Stack                    |
| Costume Manager        | Ned Lemley                     |
| Properties Managers    | Sally Crickman, Jean deCartier |
| Artist Coordinator     | Jeani Reynolds                 |
| Program Coordinator    | Linda Billings                 |
| Custodian              | Finn Archinuk                  |
| Photographer           | David Lowes                    |
| Box Office Manager     | Dick Newson                    |
| Head Scenic Carpenter  | John Taylor                    |

## Theatre Team

Admin/Box Office 250-384-2142  
Costume Loft 250-384-2025  
Mailing Address  
805 Langham Court  
Victoria, B.C. V8V 4J3  
email: [boxoffice@langhamtheatre.ca](mailto:boxoffice@langhamtheatre.ca)  
[www.langhamtheatre.ca](http://www.langhamtheatre.ca)  
Charitable donation number: 11928 5294 RR001

## Acknowledgements

General Paint, Hudson's Bay, Keri Garland, Chek News, Erica Thomas, Clayton Jevne @theatreinconnue, Linda MacNaughton, Brian Globus, Dan Martin, Christchurch Cathedral, Sheri Willing, Penny and Bill Pitcher, Maison George.

***Please refrain from using perfume/cologne when attending a performance.  
Some of our patrons are highly allergic to certain scents. Thank you.***

Programme Advertising, Design and Production



P.O. Box 8629 • Victoria V8W 3S2 • 250.480.3206  
Publishers Philomena Hanson/Paul Hanson • Design/Production Lyn Quan  
Email: [vicarts@vicarts.com](mailto:vicarts@vicarts.com) [www.vicarts.com](http://www.vicarts.com)



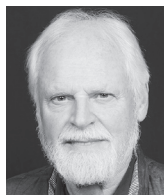
**TONY CAIN** *Director*

Tony is presently the Artistic Director of Target Theatre Victoria. Selected theatre credits as an actor include, Nick Bottom (*Midsummer Night's Dream*), Gloumov (*Diary of a Scoundrel*), SS Doctor Capesius (*The Investigation*), and Alan Bennett (*The Lady in the Van*) on the Langham stage, and Web (*Fire Wall*) on the Belfry stage. Directing credits include *Elizabeth The Queen*, *Duchess Of Malfi*, *Talking Heads* and *The Melville Boys* for the Langham stage. Tony was trained at the Drama Centre London.

## Production Biographies

**TERRY OLIVER** *Assistant to the Director*

Terry worked in UK in 70's & 80's repertory and touring commercial theatre in London and Manchester before joining RSC in Stratford under Trevor Nunn and then the National Theatre and worked on Olivier's *Long Day's Journey into Night*, *The Party* and original production of *Equus* as well as writing and co-directing many London Fringe plays. Currently dramaturge for Target Theatre and writing three plays – *A Leap In The Dark*, *Whistleblowers* and a play on Creationism.



**MICHAEL GOSSELIN** *Co-Producer*

Michael is in his second season at Langham. You may remember him in such roles as the psychiatrist, or the priest, from *The Graduate*. He is currently working under the tutelage of the incomparable Sylvia Rhodes as co-producer of *People*, as well as ASM. Michael would like to thank the entire Cast & Crew of *People*, for the patience and dedication they have shown in the entire process



**SYLVIA RHODES** *Co-Producer*

Sylvia is better known as an actress and director. Her most recent acting role at Langham was as *The Lady in the Van* and her most recent directorial works include *84 Charing Cross Road*, and *Rabbit Hole*.



**SHEILA MCKENZIE** *Stage Manager*

Sheila is back in the booth after ridding herself of post-retirement contracts, and enjoys facilitating the magic of theatre in her leisure. Despite her fears, our talented director, cast and crew made her police whistle (almost) unnecessary during rehearsals! Sheila previously stage managed *Private Lives*, *Da* and *All My Sons*, and appeared as feisty Irishwoman Deirdre in *Waiting in the Wings* – literally a role to die for! She hopes you share her love of *People*.



**JEAN DE CARTIER** *Properties/Set Decor*

Jean has been a volunteer at Langham Court Theatre since 2008 and has since had assisted in backstage dresser in over twenty productions. Her most recent show was *Boeing Boeing* as set dresser with director Toshik Bukowiecki. Jean says "she has been challenge once again in finding equipment and props to create the set for *People*, its been an exciting process." She thanks the community of *People* for their help and support.





**ANNE SWANNELL** *Set Designer / Paintings*

Anne worked for many years as a graphic artist for the Times-Colonist, later moved on to making mosaic panels and being an artist in the schools. Her mosaic whale is in Sidney; a mandala's in Sooke. For the last two years, she's been scenic painter for several St. Luke's and Langham Court productions. This is her first set design. Nearly all the paintings (copies of old masters) on the set were done by her.

**DIANA KEATING** *Costume Design*

Diana , along with her fashion savvy asst. designer Heather has had a lot of fun finding tweeds and ascots and Schiaparelli hats for this production of *People*. She has particularly enjoyed the positive, professional and good-humored ambience on the set of this show. Thank you to all who have reminded her that it is still possible to say, with glee, "Hey, gang! Let's put on a show"



**TIM WATTERS** *Sound Design*



Timothy Watters, the Sound Designer for *People*, has previously been sound operator for Langham Theatre productions of *The Graduate*, *Rosencrantz & Guildenstern Are Dead*, and *Pride & Prejudice*. He is also a member of Target Theatre where his roles vary from stage manager, sound designer, sound operator, and actor. Tim's training in music composition has influenced his aesthetic towards sound design.

## Production Biographies

**ANASTASIA SCHWARTZE** *Lighting Design*

Anastasia has been involved in theatre since middle school, starting with acting. Backstage is where she feels the most at home, whether it's creating props, hanging lights, or whatever else needs doing. She graduated from the UVIC Theatre Dept. in 2010. Past lighting designs for Langham Court include *The Beauty Queen of Leenane*, *Better Living* and *The Penelopiad*.



**PENNY PITCHER** *Shadow Stage Manager*



Penny retired two years ago to Victoria from Golden, BC, where she had acted with The Golden Players, her greatest challenge being the 90-minute one woman show, *The Year of Magical Thinking*. She played Mama Bear in the St. Luke's panto (December 2012) and wealthy matron, Mrs. Ethel Chauvenet (Harvey, Langham, October 2013). During the summer of 2014, Penny cast a spell as Witch #3 in Macbeth with Shakespeare-by-the-Sea. She currently acts with Target Theatre.

Penny wants to thank Tony Cain for asking her if she had any spare time and Sheila McKenzie, Stage Manager extraordinaire, in whose shadow she dared to walk. Working the other side of the footlights has been an experience that Penny will never forget.

## About the Playwright



**ALAN BENNETT** *Playwright*

Playwright, author, performer Alan Bennett, born 1934, in Leeds England, attended Oxford University where he taught medieval history and in 1960 collaborated with Dudley Moore, Peter Cooke and Jonathan Miller in the satirical revue, *Beyond the Fringe*, which brought him instant fame. His plays *History Boys*, and *Madness of George III*, were made into films and *Lady in the Van* with Maggie Smith will be released shortly. *History Boys* and *Lady in the Van* were performed at Langham a few years ago. In 1987, a series of monologues for TV earned him the 1st of 5 Laurence Olivier Awards. Director Richard Eyre writes, "There is no playwright who is so liked by the public, so familiar or so quintessentially English".



*Best wishes for 2015  
to all the wonderful "People" in the  
Langham Court Theatre community.*

**Carole James, MLA**

Victoria-Beacon Hill  
Community Office  
1084 Fort Street

tel: 250.952.4211  
carole.james.mla@leg.bc.ca  
www.carolejamesmla.ca

**P R E S T I G E**  
PICTURE FRAMING ETCETERA

OVER 30 YEARS IN VICTORIA AT 2002 OAK BAY AVENUE  
250-592-7115 • [www.prestigepictureframing.ca](http://www.prestigepictureframing.ca)

Enhance and upgrade your present or newly acquired art work  
to current conservation standards and design concepts.





Cast and Crew of *People*

## Cast Biographies



**ELIZABETH WHITMARSH** *Dorothy Stacpoole*

This is a far cry indeed from Elizabeth's previous roles as Lady Catherine de Bourgh in Langham's recent production of *Pride and Prejudice* and as The Duchess of Berwick in *Lady Windermere's Fan*. Now, in *People*, she plays the reclusive Lady Dorothy Stacpoole, mouldering away in her crumbling stately pile. Surrounded by decay and detritus, she is besieged by an overbearing sister and corporate graspers. Alan Bennett has written a wonderful play with a gem of a part in Lady Dorothy, and under Tony Cain's superb direction, Elizabeth hopes she satisfies the director's leap of faith in casting her against type.

**GELI BARTLETT** *Iris*

Geli first graced the Langham stage in 2002 in Alan Bennett's farce, *Habeas Corpus*. Last seen at Langham in 2006 portraying a gaggle of characters aged between 8 and 84 as well as sundry livestock and a clock in Dylan Thomas' *Under Milk Wood*. Since then she's appeared at Theatre Inconnu, WHOS (William Head), St. Luke's, the Victoria Fringe Festival and with Giggling Iguana Productions on the grounds of Craigdarroch Castle. She is much obliged to Tony for allowing her to add Iris Whatsername to such notably crusty dames as Mrs. Ogmores-Pritchard, Frankenstein's mother, Lady Bracknell, Ethel Thayer, and, most recently, Antigone's Nurse.





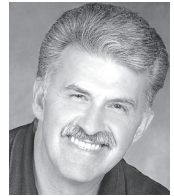
**JAN STREADER** *June Stacpoole*

Recipient of a Lifetime Achievement Award from Edmonton's Walterdale Theatre, Jan has produced and toured in Fringe circuit hits *Bronte*; *Shirley Valentine*; *Two and Four in the Crib*. Other credits include Sterling Winner *Elizabeth the Queen*; Sterling nominee *Treatment*; *The Importance of Being Earnest*; *The Lion in Winter* and *Blythe Spirit*. Jan performs on film and TV and tours with Edmonton International Streetfest as ZuZu; Professor McComical; Mrs. Collywobbles and various other clown characters.

**Cast Biographies**

**TOSHIK BUKOWIECKI** *Theo*

Toshik has done worked on over 60 shows at Langham Court Theatre – acting, directing, and designing sets and costumes. He most recently directed *Boeing Boeing* – Langham’s summer show. Toshik’s last appearance on stage was in *The 39 Steps* where, as one of the Clowns, he played fifteen characters. Other acting credits include Harry Raymond in *The Stillborn Lover*, Harry Henderson in *Racing Demon*, Antonio in *Twelfth Night*, Dr. Austin Sloper in *The Heiress* and Whit in *Of Mice and Men*. Alan Bennett is Toshik’s favourite playwright and Toshik appreciates the challenges he encountered in researching his character for this production.

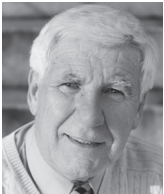


**JASON STEVENS** *Bevan*

Jason received his training at The Drama Centre London and has performed in both London and New York. Past shows include *Not About Heroes*, *Let Us Now Praise Famous Men*, *Racine’s Britannicus*, *The Dutch Courtisan*, *Titus Andronicus*, numerous roles in *Antigone*, a play he also directed for Chashama Theatre Co. In Times Square. Jason teaches at the Victoria Academy of Dramatic Arts and the Pacific Film and New Media Academy. He was last seen as The Player in *Rosencrantz and Guildenstern*.

**JOHN OWEN** *Lumsden*

My last Langham production was 1998's *Loot* by Joe Orton. Other shows here include: *This Happy Breed*, *No, No, Nanette*, *Rose*, *The Murder Room*, *Salad Days*, *The Night of the Tribades* and *The Loves of Cass McGuire* where I met my wife. *Tribades*, was never staged at this theatre because of the rather unsavoury language. My, how the times change! I am thrilled to be part of this amazingly talented and creative group.



**THOMAS HOLDER** *Les*

Tom worked with the Tara Players in Winnipeg for 25 years before retiring to Victoria and joining Langham Court. He has performed at the Acting Irish Theatre; an adjudicated competition involving Irish Associations from across North America and has also appeared in the Major Playwrights Festival in Winnipeg. Tom’s acting debut in Victoria was as Phillippe in Langham’s production of *Heroes*. Tom has also lent his set building expertise in each Langham production over the last year.



**HENRY SKEY** *Nigel*

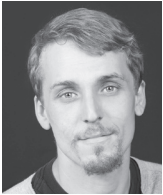
Henry has had a lot of experience talking with people, making him a prime candidate for a role in this play. It started with a trip to the butcher to order some meat, followed by a purchase of delicious high-fiber bread at the baker, ending with an inquisitive tour of the candlestick maker's shop. He can only imagine what else he'll learn from his new cast mates. Extra special thank you to Kyla, Mom and Mr. Guthrie.

**MALCOLM HARVEY** *Bruce*

Malcolm caught the theatrical bug only recently. He helped to build sets and assist as stage crew for the Victoria Operatic Society's productions of *Thoroughly Modern Millie* and *A Christmas Story – The Musical*. Intrigued by the magic of the theatre he decided to try his hand at performing. The Langham Court production of *People* is Malcolm's first on-stage appearance.



**BOBBY CLEVELAND** *Colin*



Bobby studied Theatre Arts at Algonquin College in Ottawa. He was recently seen as Doug in *Così* at Puente Theatre's Wordplay 2014, as an orderly in Fear No Opera's *Così Fan Tutte* and as a Tragedian in *Rosencrantz and Guildenstern are Dead* here at Langham. Bobby is thrilled to be welcomed back to the Langham Court stage. He would like to thank Tony, the cast and crew for a wonderful experience.

**Cast Biographies**

**JENNIFER ELLE CANNON** *Louise*

This is Jennifer's first show with Langham Court. Her last role was as Antonia Quixana in, *Man of La Mancha*. She is delighted to be able to play in Alan Bennett's world especially since he has brought two of her favourite performance mediums together...



**BRYCE KNUDTSON** *Jack*



Bryce was an actor, writer, and director within the theatre community of Saskatoon, SK for over 10 years. He was in a slew of variety, children, murder mystery, and dinner theatre shows. He's excited to be onstage for the first time at Langham, and says he's going to "try really hard not to mess this one up."

**ROSALIE TREMBLAY-JOHNSTON** *Brit*

Rosie recently graduated from the Victoria Academy of Dramatic Arts; a school she couldn't recommend highly enough. Rosie has been dreaming of acting and singing ever since she can remember and is now beginning her journey with her first performance at Langham court. She owes it to her fiercely dedicated and knowledgeable teachers VADA, her loyal and best friends, her mom and dad and big brother.



**VICTORIA STARK** *Vicky*



Victoria is beyond excited to be a part of her first Langham production! Currently earning her BFA in Theatre, at UVic, her past credits include Nora in *A Doll's House* (Phoenix Theatre) Lisa-Marie in *Sunday Dinner* (Phoenix) Babe MaGrath in *Crimes of the Heart* (Phoenix), and multiple efforts for *Picnic* (Phoenix). She would like to thank her fellow cast-members, friends, and family for all of their love, support, and understanding. This truly is a treat!

President Luke Krayenhoff  
 Vice President Karrie Ayotte  
 Treasurer Andrew Lee  
 Secretary Andrea Pite  
 Members at Large Rosemary Jeffery  
 Vinnie Chadwick  
 Montgomery Bjornson  
 Mike Miller  
 Angela Henry  
 Wendy Merk  
 Lorene Cammiade

## Board of Directors

Bill Adams  
 Ann Marie Arneson  
 Jim Boardman  
 John Britt

### Life Members

Toshik Bukowiecki  
 Ginny Carter  
 Roger Carr  
 Michael Chadwick


Vinnie Chadwick  
 Antoinette Church  
 Elsie Farr  
 John Fear  
 Phyllis Gaskell  
 Corinna Gilliland  
 Barry Grimshaw  
 Jill Groves  
 Rosemary Jeffery  
 Kai Hansen  
 Peta Heald

Angela Henry  
 Gil Henry  
 Ned Lemley  
 Sylvia Lindstrom  
 Nan Long  
 Alan MacKenzie  
 Peta MacKenzie  
 Thomas Mayne  
 Judith McDowell  
 Dick Newson  
 Sylvia Rhodes

Drew Shand  
 Paul Terry  
 Graham Thomson  
 Jean Topham  
 Judy Treloar  
 Michael Tyler  
 Rick Underwood  
 Barb Waldner  
 Jutta Woodland  
 Brian Woodman

MUSIC, MURDER & MAYHEM!  
 FINISH DICKENS' STORY

# The Mystery of Edwin Drood



BOOK, MUSIC & LYRICS BY **Rupert Holmes**  
 DIRECTED BY **Roger Carr**  
 MUSIC DIRECTION BY **Donna Williams**  
 CHOREOGRAPHY BY **Sylvia Hosie**

LANGHAM  
 COURT  
 THEATRE

MAR ★ MAR  
 05 TO 21

250.384.2142 langhamtheatre.ca

2014 - 2015  
 SEASON

## Palm Court *light* Orchestra

# Valentine Diva

**Lambroula Pappas**  
 SOPRANO



This year's Valentine concert presents one of Vancouver's finest sopranos in a program to warm the heart. It features beautiful opera arias from *La Boheme* and *Tosca*, as well as *Ave Maria* and Sigmund Romberg's *Desert Song*.

UVic Centre **Saturday Feb 14**  
 250 721 8480 **7:30pm**

## Art Exhibition

### ALISON DUERDEN

Alison Duerden was born in Toronto, Ontario. She is a visual artist who holds a Bachelor of Fine Arts degree from the Ontario College of Art and Design, where she studied painting, printmaking, and sculpture. Alison is a daydreamer, a desert connoisseur, carries a curiosity for the human psyche, and thinks kraft paper is underrated.

Art is available for viewing in the lounge during theatre hours. Admission-free art shows are held the first Sunday of each show run. For more information, please call administration at 250-384-2142 or visit [www.langhamtheatre.ca/about/art-shows](http://www.langhamtheatre.ca/about/art-shows).

### Did you know Langham Court Theatre has a Costume Loft?

We offer affordable costume rentals in a wide variety of periods and styles, ideal for theatre, film and photography, including school productions and special events.

Call 250-384-2025 or visit [www.langhamtheatre.ca/costumes](http://www.langhamtheatre.ca/costumes)

Congratulations Langham Court Theatre  
on your *86<sup>th</sup>* season.

A theatrical gem in the heart of  
Rockland and Fairfield.

**Patricia Parkins**  
**250.383.2033**

[victoriaproperties.net](http://victoriaproperties.net)



Photo: YAM Magazine



**Happy New Year!**  
**to all the great**  
**"People" supporting**  
**Langham Court Theatre**



**Hillside Printing**

Educate. Inform. Entice. Inspire.

3050 Nanaimo Street, Victoria, BC

Ph: (250) 386-5542 • Fx: (250) 386-7838

[sales@hillsideprinting.com](mailto:sales@hillsideprinting.com) [www.hillsideprinting.com](http://www.hillsideprinting.com)

# Victoria Theatre Guild

*The Victoria Theatre Guild and Dramatic School thanks the following individuals and sponsors for generously supporting the 2014-2015 Season. If you would like to help us continue bringing quality live theatre to the community, please contact the box office at 250-384-2142.*

## BENEFACTORS

(\$50,000 +)

Jack Droy

## DESIGNERS

(\$1000-9000)

City of Victoria

The Estate of Jane French

The Estate of Jack Droy

Paul Terry

## STAGE MANAGERS

(\$400-999)

Todd Carter

The Estate of Jane French

Dorothy Hosie

Donald Johannessen

Bill & Shirley Kovits

Tommy Mayne

Edwin & Carmen Pitcher

Margaret L. Smith

Valerie Smith

## LEADING ACTORS

(\$100-399)

Gordon Alexander

Kenneth Austin

Glenn & Shirley Boughton

Sherry Butler

Adelle Clements

Don Cooper

Peter Darling

Patricia Davey

Barbara Fields

Gil & Angela Henry

Bob Herron

Fay Husband

Nan Long

Bruce MacKenzie

Diane McLaren

Victor Neufeldt

Elizabeth Riehm

Jon Scheer

John & Suzanne Stewart

Nick Stull

Michael Tyler

Barbara Waldner

Barrie Webster

Derek Whittle

Anonymous

Our gratitude to the  
48 Supporting Players  
(up to \$99)

## MEDIA SPONSORS



FOCUS

ArtsVictoria  
artsvictoria.ca/promo



## TELEVISION MEDIA SPONSOR



Vancouver Island

## RADIO MEDIA SPONSORS



## BUSINESSES



VICTORIA  
FOUNDATION

island  
office equipment ltd.

The Victoria Guild & Dramatic School gratefully acknowledges the financial support of the Province of British Columbia Gaming Policy and Enforcement Branch.

Langham Court Theatre is proud to support the following non-profit societies that are a part of the 2014/2015 season:

Gish Abay Pre-school -Bahir Dar, Ethiopia

The OCTA Collective Society [www.octacollective.com](http://www.octacollective.com)

Canadian Diabetes Association [www.diabetes.ca](http://www.diabetes.ca)

Indigenous Perspectives Society [www.ipsociety.ca](http://www.ipsociety.ca)

double bill – two one-act plays

JAN 27–MAR 1, 2015



## THE BEST BROTHERS

by Daniel MacIvor

...comedy at its purest. TORONTO STAR

1291 Gladstone Ave  
at Fernwood

# Belfry

Theatre

## HOW TO DISAPPEAR COMPLETELY

by Itai Erdal, James Long, Anita Rochon  
& Emelia Symington Fedy

warm, witty and, naturally, beautifully lit.  
VANCOUVER SUN

tickets on sale now at 250-385-6815 or [www.belfry.bc.ca](http://www.belfry.bc.ca)



HotJet

FOCUS

THRIFTY FOODS

TIM'S LUXURY

Booka Day Off

CITY OF VICTORIA

BRITISH COLUMBIA ARTS COUNCIL

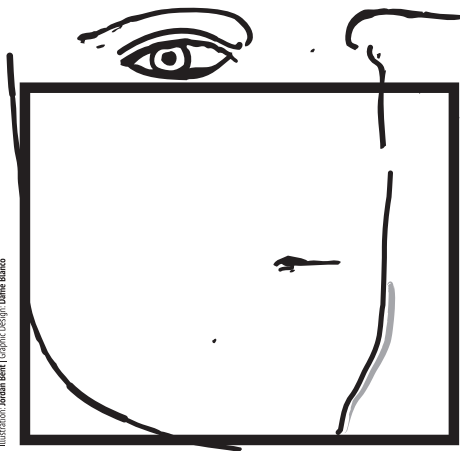
BRITISH COLUMBIA

Canada Council for the Arts

Central City Arts

CPD

Illustration: Jordan Brent | Graphic Design: Dulce Blanco



theatre making policy

*maladjusted* will also be playing on the island in the following communities: Nanaimo, Duncan, Port Alberni, Campbell River, Port Hardy & Alert Bay

**One Night ONLY!**

theatre for living (headlines)  
presents

2015 BC/Alberta Tour



*"a remarkable piece of reality, piece of life itself"*

# maladjusted

humanizing mental health  
the system. the people. the play.

Created and performed by patients and caregivers

Featuring: Columpa Bobb\*, Christine Germano, Martin Filby, Micheala Hiltgergerke, Pierre Leichner, Sam Bob\*  
Directed by David Diamond

One night only in Victoria  
January 31, 2015 @ 7:30pm

Songhees Wellness Centre tickets at: <http://ow.ly/F7vHQ>

Request from:



[theatreforliving.com](http://theatreforliving.com)



Early  
Music  
Society  
OF THE ISLANDS

presents:

A Northwest Baroque  
Masterworks Project

HANDEL'S

# Theodora

A monumental production of Handel's favourite oratorio

Alix Goolden  
Performance Hall  
907 Pandora Avenue

Sunday, February 15 • 3 PM

Pacific Baroque Orchestra • Vancouver Cantata Singers  
Alexander Weimann [earlymusicsocietyoftheislands.ca](http://earlymusicsocietyoftheislands.ca)

An extraordinary week  
to explore the music of G.F. Handel

THE JUSTLY CELEBRATED  
**MR. HANDEL**

A rare four days to  
explore Handel's music

Marc Destrubé  
Artistic Director, violin

Kathleen Brett, soprano

Ben Butterfield, tenor

Kristin Olson, oboe

Catherine Webster, soprano

Pacific Baroque Orchestra

Victoria Children's Choir

"Handel is the  
unattained master  
of us all."

— BEETHOVEN

FESTIVAL SPONSOR



*The Renaissance*  
Retirement Residence

PACIFIC  
*Baroque*  
FESTIVAL

Feb 19-22, 2015  
Victoria, BC

PRESENTED IN  
PARTNERSHIP WITH  
Victoria Conservatory of  
**Music** 50

[pacbaroque.com](http://pacbaroque.com)



Patrimoine  
canadien Canadian  
Heritage

