

★ LANGHAM COURT THEATRE PRESENTS ★



**SEP 30 - OCT 17, 2015**

# **YOU CAN'T TAKE IT WITH YOU**

**A COMEDY BY  
MOSS HART & GEORGE S. KAUFMAN**

**DIRECTED BY  
CHRIS MOSS**



University  
of Victoria

University Centre  
Farquhar Auditorium

Seek culture, creativity, community. Find it at the Farquhar Auditorium.

## Join us for our 2015-16 Season



### The Kingston Trio

See the folk trio that launched  
the folk revival of the 1960s, live!

**Oct. 4, 7:30pm**



### The Comic Strippers

Male stripper parody and  
improv comedy show.

No nudity, just extreme hilarity!

**Nov. 14, 7:30pm**



### Popovich Comedy Pet Theatre

"Holiday Circus" featuring the world famous  
pet circus! Great for the whole family!

**Dec. 12, 2:00pm**

[tickets.uvic.ca](http://tickets.uvic.ca)

**250-721-8480**

Global Arts and University Centre Farquhar Auditorium presents

## PAC@Peña Flamencura

*"If you only ever see flamenco  
once in your life, make it this!"*

Independent on Sunday, London

**October 25, 7:30pm**

[ticket@uvic.ca](mailto:ticket@uvic.ca) 250.721.8480





## Directors' Notes

Welcome to our living room! Almost anything and everything can happen here. In the midst of the depression the United States of America was looking for diversions. Federal Works Programs were employing thousands throughout the country. The Hollywood film industry was pumping out films and creating celebrities every week. Jessie Owens became the star of the Berlin Olympics and gathering storm clouds in Europe burst over the Spanish Civil War. The hedonistic tenor of this play and its witty sarcasm, which left no social level untouched at the time, was just what the nation needed to offset its sense of gloom as it slid from 1929 into the depression years. Almost eighty years later the play still abounds with humour and laughter. It must have been an irreverent revolution when it debuted in 1936!

**Chris Moss**



Langham Court Theatre  
presents

# You Can't Take It With You

By Moss Hart & George Kaufman

*You Can't Take It With You* is presented by special arrangement with  
Dramatists Play Service, Inc., New York.

October 1 – 17, 2015

Director	<b>CHRIS MOSS</b>
Producers	<b>MICHAEL GOSSELIN, IRENE DOERKSEN</b>
Stage Manager	<b>NICK STULL</b>
Asst. Stage Managers	<b>IRENE DOERKSEN, TONY CAIN</b>
Set Design	<b>TONY HUBNER</b>
Lighting Design	<b>ANASTASIA SCHWARZE</b>
Sound Design	<b>FLEMMING SORVIN</b>
Costume Design	<b>ELODIE ADAMS</b>
Properties	<b>VANESSA TOM</b>
Set Decor	<b>MARILYN KUSS</b>

## Cast

Penelope Sycamore	<b>WENDY CORNOCK</b>
Essie Carmichael	<b>MICHELLE MITCHELL</b>
Rheba	<b>JO BARNES</b>
Paul Sycamore	<b>GREG MARCHAND</b>
Mr. De Pinna	<b>JAYMES D. GOODMAN</b>
Ed Carmichael	<b>MITCH BARNES</b>
Donald	<b>MICHAEL GOSSELIN</b>
Martin Vanderhof (Grandpa)	<b>MALCOLM EVERETT HARVEY</b>
Alice Sycamore	<b>TARA BRITT</b>
Mr. Henderson	<b>IAN CHAPRIN</b>
Tony Kirby	<b>JAMES JOHNSON</b>
Mr. Kirby	<b>DREW WAVERYN</b>
Mrs. Kirby	<b>BEVERLY VAN DRUTEN-BLAIS</b>
Boris Kolenkhov	<b>GRAHAM ROEBUCK</b>
Gay Wellington	<b>ELIZABETH BRIMACOMBE</b>
Duchess Olga Katrina	<b>DIANA KEATING</b>
G-Man # 1	<b>TOM HOLDER</b>
G-Man # 2 (Mac)	<b>CARL POWELL</b>
G-Man # 3 (Jim)	<b>NATHAN BLACK</b>

## Setting

The home of Martin Vanderhof, New York City, 1934

## Act I

Wednesday Evening

(Note: The curtain will close during the Act to denote the passing of several hours)

## Act II

One week later

## Act III

The next day

## Production Team

Head Scenic Carpenter Set Construction	<b>GEORGE SCOTT</b> <b>MIKE KUSS, DAVID BURBANK, JULIUS MASLOVAT,</b> <b>DOUG CRAIG, CHARLIE ENCELL, GORDON ALEXANDER,</b> <b>TOM HOLDER, ALAN SWAIN</b>
Set Painters	<b>DAVID CHAPLIN, ANNE SWANNELL, CARL POWELL,</b> <b>JOHN C. SMITH, CHRIS MOSS</b>
Lighting Operators	<b>COLIN HOPCRAFT, JENNIFER ILLINGWORTH,</b> <b>ANNIE LEPAGE, CHRIS CLARKE</b>
Sound Operators	<b>FLEMMING SORVIN, TIM WATTERS</b>
Stage Crew	<b>ALF SMALL, JENNIFER ILLINGWORTH</b>
Prop & Set Assistant	<b>LINDA MACNAUGHTON</b>
Lighting Crew	<b>JENNIFER ILLINGWORTH, PAUL HILTON,</b> <b>KARRIE AYOTTE, COLIN HOPCRAFT, MICHAEL GOSSELIN,</b> <b>ANASTASIA SCHWARZE, PERRY BURTON</b>
Costume Assistants	<b>MARY ELLEN LAW, SUSAN HOUSEL, DIANA KEATING</b>
Prompters	<b>IRENE DOERKSEN, MARILYN KUSS</b>
Hair Consultant	<b>LAL O'CONNOR</b>

---

<b>General Manager</b>	<b>Tom McCarthy</b>
<b>Box Office Manager</b>	<b>Dick Newson</b>
<b>Costume Manager</b>	<b>Lisa Leighton</b>
<b>House Manager</b>	<b>Karen Stack</b>
<b>Facilities Manager</b>	<b>David Chaplin</b>
<b>Properties Managers</b>	<b>Sally Crickman, Jean de Cartier</b>
<b>Artist Coordinator</b>	<b>Jeani Reynolds</b>
<b>Custodian</b>	<b>Finn Archinuk</b>
<b>Photographer</b>	<b>David Lowes</b>
<b>Head Scenic Carpenter</b>	<b>George Scott</b>
<b>Program Coordinator</b>	<b>Michael Gosselin</b>

## Theatre Team

Admin/Box Office 250-384-2142  
Costume Loft 250-384-2025  
Mailing Address  
805 Langham Court  
Victoria, B.C. V8V 4J3  
email: [boxoffice@langhamtheatre.ca](mailto:boxoffice@langhamtheatre.ca)  
[www.langhamtheatre.ca](http://www.langhamtheatre.ca)  
Charitable donation number: 11928 5294 RR001

## Acknowledgements

Maylee Meyer, Saanich Historical Artifacts Society  
Steve Meikle, Fire Captain at Yates Street Firehall, Finn Archinuk, Sally Crickman,  
Timothy Watters

*Please refrain from using perfume/cologne when attending a performance.  
Some of our patrons are highly allergic to certain scents. Thank you.*

Programme Advertising, Design and Production



P.O. Box 8629 • Victoria V8W 3S2 • 250.480.3206  
Publishers Philomena Hanson/Paul Hanson • Design/Production Lyn Quan  
Email: [vicarts@vicarts.com](mailto:vicarts@vicarts.com) [www.vicarts.com](http://www.vicarts.com)



**CHRIS MOSS** *Director*

Chris is delighted to finally direct a show at Langham Court. He wishes to thank all of the people that have made this possible. Most of all he wishes to thank his wife for agreeing to let him direct three shows this year. A special thanks to his Producer, Michael Gosselin, for guiding him through the maze.



**MICHAEL GOSSELIN** *Producer/Donald*

Michael is doing double duty on *You Can't Take It With You*. Other producing credits include, *People* and *August: Osage County*. He has also performed in *The Graduate* and *August: Osage County* at Langham. Michael is pleased to see many new faces on this production, and would like to thank all cast & crew for creating a stress free environment.

## Production Biographies



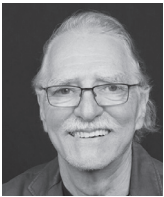
**IRENE DOERKSEN** *Producer*

Irene joined Langham Court last season. She began as an usher and bartender and has since been a dresser for *People* and lighting operator for *August: Osage County*. Irene has loved it all. She is having a blast watching, learning, and laughing along with the cast and crew. She would like to thank her husband who has been so supportive of her theatre time.



**NICK STULL** *Stage Manager*

Nick had the pleasure to initially work with director Chris Moss on an original work, performed at last year's Fringe, *Red Herring*, by our own Bill Adams. As this is Chris's first directorial endeavor at Langham Court Theatre, Nick, who has stage managed many plays here and played Beverly in *August: Osage County*, once again takes to the booth.



**TONY HUBNER** *Set Designer*

Tony was delighted to accept Chris Moss's invitation to set this American classic. He has not been completely idle, moving house while designing the set for Victoria Gilbert and Sullivan Society's *Iolanthe*. Previous sets include *HMS Pinafore* and *Pirates of Penzance* for G & S, Langham's female version of *The Odd Couple* and *Under Milkwood*, and Langley's *Bard in the Valley* for his late friend, Al Thane.



**ANASTASIA SCHWARZE** *Lighting Design*

Anastasia has been involved in theatre since middle school, starting with acting. Backstage is where she feels the most at home, whether it's creating props, hanging lights, or whatever else needs doing. She graduated from the UVIC Theatre Department in 2010. Past lighting designs for Langham Court include *The Beauty Queen of Leenane*, *Better Living* and *The Penelopiad*.



**FLEMMING SORVIN** *Sound Design*

Flemming feels like he has come home after a long journey by creating the sound design for *You Can't Take It with You*. This is his first Langham Court production after a career working on set for films in Vancouver, photographing medical specimens, shooting and editing educational video, and living as a full time dad and husband.

## Production Biographies



**ELODIE ADAMS** *Costume Designer*

It was a fun challenge to interpret the director's vision for the zany characters in *You Can't Take It with You*. Elodie hopes that the end result will be an enhancement to their already zany performances. Elodie studied costume design at Ecole Art & Style in Lyon, France, and has worked in opera, dance, amateur and professional theatre in France, the U.K. and Canada.



**VANESSA TOM** *Props*

Vanessa grew up with Stage 43, Vagabond Players and other Greater Vancouver Community Theatres. Since her first role as Gretel, she has excelled in stage design/decoration. With a move to Victoria in 2014, this is her 1st production with Langham Court. A graduate of Kwantlen College furniture design, she works in Home and Office Interiors.



**MARILYN KUSS** *Set Decorator*

This is Marilyn's first time working on Props and Set Décor and she's been having a blast - in more ways than one. She worked back stage on *The Odd Couple*, *Female Version* (2010), *Rabbit Hole* (2012), and *Boeing, Boeing* (2014). She also had fun making the Poster Boards to share the archival photos from the 1948 and 1980 productions of this show.



*Bravo Langham Court Theatre.  
You've enchanted Victoria  
audiences since 1929! Take a bow!.*

**Carole James, MLA**

Victoria-Beacon Hill  
Community Office  
1084 Fort Street

tel: 250.952.4211  
carole.james.mla@leg.bc.ca  
www.carolejamesmla.ca

## About the Playwrights



**GEORGE SIMON KAUFMAN** (November 16, 1889 – June 2, 1961) was an American playwright, theatre director, producer, humorist, and drama critic. In addition to comedies and political satire, he wrote several musicals, notably for the Marx Brothers. One play and one musical that he wrote won the Pulitzer Prize for Drama: *You Can't Take It with You* (1936, with Moss Hart), and *Of Thee I Sing* (1932, with Morrie Ryskind and Ira Gershwin). He also won the Tony Award as a Director, for the musical *Guys and Dolls*.



**MOSS HART** (October 24, 1904 – December 20, 1961) was an American playwright and theatre director. After working several years as a director of amateur theatrical groups and an entertainment director at summer resorts, he scored his first Broadway hit with *Once in a Lifetime* (1930), a farce about the arrival of the sound era in Hollywood. The play was written in collaboration with Broadway veteran George S. Kaufman. During the next decade, Kaufman and Hart teamed on a string of successes, including *You Can't Take It with You* (1936) and *The Man Who Came to Dinner* (1939). Though Kaufman had hits with others, Hart is generally conceded to be his most important collaborator.

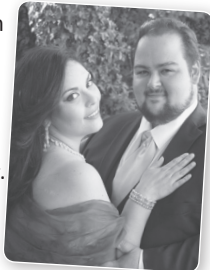
### Palm Court *light* Orchestra

2015 - 2016  
SEASON

## Romantic Encounter

Enjoy love duets from Puccini's *Tosca* and *Madam Butterfly*, Lehar's *The Merry Widow* and Richard Rodgers *South Pacific*.

This is a delightful programme with more than a hint of Andrea Bocelli and Katherine Jenkins.



**Sunny Shams**  
TENOR

**Shadan Saul**  
SOPRANO

UVic Centre  
250 721 8480

**Saturday Oct 17**  
**7:30pm**

## ST. LUKE'S PLAYERS Opening Night

by Norm Foster  
directed by  
Geoffrey J. Davidson

**OPENING  
SHOW IS  
2 FOR 1**



**EVENING Performances**  
at 7:30 p.m. on October 14, 15, 16 17,  
21, 22, 23 & 24  
**MATINEE Performances at 2:00 p.m. on**  
October 17, 18, 24 & 25

**TICKETS \$16 on sale Sept. 1**  
Now buy tickets through Ticket Rocket:  
• [www.ticketrocket.co](http://www.ticketrocket.co) • phone 250-590-6291  
• Ticket Rocket box office  
Tickets are also available at the door

"Opening Night" is presented by special arrangement with SAMUEL FRENCH, INC.

**ST. LUKE'S HALL • 3821 CEDAR HILL X ROAD**  
**AT CEDAR HILL ROAD, VICTORIA**  
250-884-5484 • [www.stlukesplayers.org](http://www.stlukesplayers.org)





*Cast and Crew of You Can't Take It With You*



**BERWICK**  
RETIREMENT COMMUNITIES



At Berwick Retirement Communities, you will enjoy an unparalleled standard of living at a superior value. Berwick offers all the comforts of home with the amenities and hospitality you come to expect from resort style living. Find out more about The Berwick Way™.

**Visit [BerwickRetirement.com](http://BerwickRetirement.com)**

**Berwick Royal Oak:** 4680 ELK LAKE DR., VICTORIA | 250.386.4680  
**Berwick House:** 4062 SHELBOURNE ST., VICTORIA | 250.721.4062

September 15—  
October 11  
2015

# Speed- the-Plow

BY David Mamet



"scathingly comic" NEWSWEEK

October 20—  
November 15  
2015

# Chelsea Hotel

THE SONGS OF  
LEONARD COHEN



CONCEIVED AND DIRECTED BY  
Tracey Power

"a knockout..." GEORGIA STRAIGHT

December 1—20  
2015

# A Christmas Carol

BY Charles Dickens

ADAPTED AND DIRECTED  
BY MICHAEL SHAMATA



"A superb production  
... sublime" GLOBE & MAIL

40<sup>th</sup> ANNIVERSARY SEASON SPONSORS



PUBLIC FUNDERS



Tickets 250-385-6815

belfry.bc.ca

1291 Gladstone at Fernwood

# Belfry Theatre

# A R T GALLERY

OF GREATER VICTORIA

Experience the  
thought provoking,  
boundary pushing  
works of **Anna  
Banana** and her  
collaborators.

IN PARTNERSHIP WITH  
**OPENSOURCE**



AGGV.CA





**WENDY CORNOCK** *Penelope Sycamore*

Wendy is delighted to be back at Langham. Previous shows include *Waiting in the Wings*, *Shadowlands* and *Laramie Project*. She also performs with St. Luke's and was last on stage as The Mad Hatter in *Alice with Theatre Inconnu*. Special thanks to Dave, husband and business partner extraordinaire. To a wonderful cast and crew, thanks for an adventure fueled with laughs, hard work and love dreams.



**MICHELLE MITCHELL** *Essie Carmichael*

Michelle is excited to be 'dancing' across the Langham stage yet again. Recent Langham credits include: *Better Living* (Mary Ann), *Harvey* (Myrtle Mae), *The Graduate* (Stripper), *Rosencrantz and Guildenstern Are Dead* (Ophelia), and *Elizabeth Rex* (Bear). Many thanks to her husband for his never-ending support and patience, and to the entire cast and crew.

## Cast Biographies



**JO BARNES** *Rheba*

Last seen as Fraulein Kost in *Cabaret*, Jo is happy to be back at Langham Court, working not only with husband Mitch, but with such a talented cast & crew on this madcap story. Thanks, Chris, for the opportunity! Jo has also performed with Greater Victoria Shakespeare, Shakespeare by the Sea, Victoria Gilbert & Sullivan, Four Seasons, Peninsula Players, St. Luke's & various film productions.



**GREG MARCHAND** *Paul Sycamore*

Although this is his first Langham show, Greg has a varied stage background including such roles as Rapunzel's Prince: *Into the Woods*, Fancourt Babberley: *Charley's Aunt*, and Fagin: *Oliver*. He wants to thank the amazing cast and crew, especially his wacky, wonderful Sycamore family. The world would be a much better place if we were all more like the Sycamores!



**JAYMES D. GOODMAN** *Mr. De Pinna*

Playing the hammy, overly jubilant Mr. De Pinna has been a delight. Since his last performance at Langham in *Shadowlands*, he has been performing and directing with the Victoria Operatic Society, Four Seasons Musical Society, and others. Jim dedicates this performance to the friends and loved ones who he lost this year, and to those he has gained.



**MITCH BARNES** *Ed Carmichael*

Mitch is delighted to work with so many talented and creative people on the cast and crew of this show. Previously, he has performed in the Langham Court productions, *Lady Windermere's Fan* and *The Laramie Project*. Special thanks to Chris for the opportunity to have so much fun on stage and to Jo for her constant love and support.

SPOTLIGHT ON THEATRE ALUMNI

# LOON

OCTOBER 14 - 24, 2015



Kate Braidwood (BFA'03)  
& Andrew Phoenix  
...otherwise known as

WONDERHEADS

A MAN.  
THE MOON.  
A MOST PECULIAR  
LOVE STORY.



Presented by:



250.721.8000  
PHOENIXTHEATRES.CA

EVENINGS@8PM: MON- SAT | MATINEE@2PM: OCT 24

## blue bridge *at the* ROXY

returns with  
**Refreshing  
Summer Theatre**



1 **Long Day's  
Journey Into  
Night**

by Eugene O'Neill  
May 10 - 22, 2016

2 **The Importance  
of Being Earnest**

by Oscar Wilde  
July 5 - 17, 2016

3 **Animal Crackers**

by George S. Kaufman  
& Morrie Ryskind  
May 10 - 22, 2016

**Buy a Blue Pass & Save 20%**  
Available @ Ticket Rocket.Co  
or call 250.590.6191

# VS 75

We're just getting warmed up.

## FALL AND WINTER SEASON HIGHLIGHTS

RACHMANINOFF 2  
& TCHAIKOVSKY 5

BACH'S MUSICAL OFFERING

ORLI SHAHAM PLAYS MOZART

BALLET MEETS BROADWAY

HAYDEN CELLO CONCERTO

EHNES & MAHLER 5

CALL 250.385.6515 TODAY  
VICTORIASYMPHONY.CA





**MICHAEL GOSSELIN** *Donald*  
Biography is in Production Team

## Cast Biographies



**MALCOLM EVERETT HARVEY** *Martin Vanderhof (Grandpa)*  
Malcolm is deeply grateful for the opportunity to portray the eccentric patriarch of this oddball household; a character he wanted to play as soon as he read the script. Malcolm caught the theatrical bug late in life and started out in set construction and as stage crew for the Victoria Operatic Society. His other on-stage appearance was as Bruce in Langham Court's production of *People*.



**TARA BRITT** *Alice Sycamore*  
Tara is thrilled to play Alice in *YCTIWY*. Favourite credits: Helena: *Edwin Drood*, Mrs. Hopkins/Lady Boxington: *My Fair Lady*, Bakers Wife: *Into the Woods*, Kathy: *Singing in the Rain*, Elmira: *Nevermore*, Sarah: *Guys & Dolls*, Anita: *West Side Story* and Eva Peron: *Evita*. She is a director and choreographer for many companies in Victoria and owner/AD of Victoria Youth Musical Theatre.



**IAN CHAPRIN** *Mr. Henderson*  
*Red Herring* (2014) was Ian's first Langham performance. He started acting in Waterloo, Ontario while studying neuroscience, then co-founded and directed TheatreSports Toronto, performed at Toronto's Alumni Theatre and Village Playhouse and taught improvisation. But, above all, he urges you to pay your taxes punctually.



**JAMES JOHNSON** *Tony Kirby*  
James is a Victoria born and raised actor, he could not be more excited to be part of a Langham Court production with an amazing collection of fun talented helpful awesome cast and crew. Past stage performances include Caliban: *The Tempest*, Algernon Moncrieff: *The Importance of Being Earnest*, Nick Bottom: *Midsummer Night's Dream*, Constable Duncan: *Stealing Christmas*.



**DREW WAVERYN** *Mr. Anthony Kirby*  
Drew is pleased to be back on stage at LCT after a two-year absence. The last production Drew appeared in was *Harvey*, in which he played an angry, over-bearing, rich guy who yelled a lot. In *YCTIWY*, he gets to show his tremendous range of acting ability by playing an angry, over-bearing, rich guy who... oh... Never mind.



**BEVERLY VAN DRUTEN-BLAIS** *Mrs. Miriam Kirby*

Beverly is delighted to be playing with such a lovely bunch of people in this hilarious production. Past roles with various troupes include a housekeeper in a castle, a leader of seven dwarves, a ditzy kleptomaniac, the king's [fitness] coach, a mischievous angel, and a not-so-evil hench-bee. She's finding that portraying a rich society snob is way too fun.



**GRAHAM ROEBUCK** *Boris Kolenkhov*

Graham has been performing onstage since childhood and can't stop. You may have seen him recently in *Daughter of Turpentine* at the Victoria Fringe Festival this summer or Theatre Inconnu's *Alice* in December. He is also an award-winning playwright and composer. Graham is thrilled to be making his Langham Court debut with *You Can't Take It With You*. Na Zdrovie!

## Cast Biographies



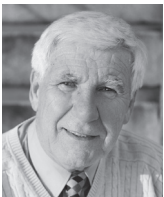
**ELIZABETH BRIMACOMBE** *Gay Wellington*

Elizabeth has found much to love in this show: laughter throughout the rehearsal journey with a grand cast and crew; freedom from her constraining sense of propriety; a sparkly dress and purple shoes. Last seen as Mrs. Braddock in *The Graduate*, Elizabeth proposes a toast – to the lovely sentiments of this play and the quest for good humour in life!



**DIANA KEATING** *Duchess Olga Katrina*

Diana is enjoying playing the Grand Duchess, a strong, courageous woman who, like hundreds of refugees, has survived innumerable losses with pride intact. Diana salutes her fellow cast and crew, a wonderful jolly bunch and her director, a remarkably calm, centred professional who adds to the fun with his quiet sense of humour. This performance is for Sylvia.



**TOM HOLDER** *G-Man #1*

This is Tom's third season with Langham Court Theatre. Previously he has appeared in *Heroes* and *People*. As well as acting, Tom, a 25 year veteran of the Tara Players in Winnipeg, has worked on Set Construction for all but one show for the past two plus seasons.



**CARL POWELL** *G-Man #2 (Mac)*

Starting as a soundboard operator for *August: Osage County* and *Humble Boy*, Carl has found the collaborative and creative environment at Langham Court Theatre to be exciting & inspiring. He feels fortunate to be performing his first acting role with such a talented cast & crew.



**NATHAN BLACK G-Man #3 (Jim)**

This is Nathan's first time on Langham's stage and he is very excited to be a part of this production. He would like to thank the cast and crew for being so welcoming and creating a wonderful experience.

**There will be fireworks tonight as Langham Court Theatre lights up its 87<sup>th</sup> season**

**Hillside Printing**

3050 Nanaimo Street, Victoria, BC • Ph: (250) 386-5542 • Fx: (250) 386-7838  
sales@hillsideprinting.com www.hillsideprinting.com



CANADIAN COLLEGE OF PERFORMING ARTS

**Our Eye-Poppin' 18th Season Includes:**

**COTTP&N**

**SPOTLIGHT:**

\* James Fagan Tait, Ron Jenkins and Sara-Jeanne Hosie, appear with the permission of Canadian Actors' Equity Association.

**MARAT/SADE** By Peter Weiss  
English version by Geoffrey Skelton,  
Verse adaptation by Adrian Mitchell  
Directed by James Fagan Tait\*  
**OCT 22-25, 2015**

**F. Scott Fitzgerald's THE GREAT GATSBY**  
Adapted for stage by Simon Levy  
Directed by Ron Jenkins\*  
**DEC 3-6, 2015**

**INTO THE WOODS**  
By James Lapine & Stephen Sondheim  
Directed by Sara-Jeanne Hosie\*  
Music Director Heather Burns  
**JAN 28 - FEB 6, 2016**

Book by Julian Fellowes,  
Music and Lyrics by Richard M. Sherman, Robert B. Sherman  
Directed by Darold Roles  
**APR 22-30, 2016**

**MARY POPPINS**  
THE BROADWAY MUSICAL

**WE ARE PROUD TO HAVE THE SUPPORT OF OUR SPONSORS:**



**AND OUR MEDIA SPONSORS:**



**SAVE MONEY AND GET FRONT ROW SEATS!  
BUY A VIP SEASON PASS FOR ALL SHOWS. CALL OR VISIT THE WEBSITE**

**250-595-9970  
CCPACANADA.COM**

President	Luke Krayenhoff
Vice President	Montgomery Björnson
Treasurer	Andrew Lee
Secretary	Andrea Pite
Members at Large	Rosemary Jeffery
	Kevin Stinson
	Bill Huzar
Production Chairs	Lorene Cammiade
	Wendy Merk

## Board of Directors

Bill Adams  
Ann Marie Arneson  
Jim Boardman  
John Britt

### Life Members

Toshik Bukowiechi  
Roger Carr  
Ginny Carter  
Michael Chadwick

Vinnie Chadwick  
Antoinette Church  
Sally Crickman  
Elsie Farr  
John Fear  
Phyllis Gaskell  
Corinna Gilliland  
Barry Grimshaw  
Jill Groves  
Kai Hansen  
Peta Heald

Angela Henry  
Gil Henry  
Ned Lemley  
Sylvia Lindstrom  
Nan Long  
Alan MacKenzie  
Peta MacKenzie  
Tommy Mayne  
Judith McDowell  
Dick Newson

Drew Shand  
Paul Terry  
Jean Topham  
Judy Treloar  
Michael Tyler  
Rick Underwood  
Barbara Waldner  
Adam Wilkinson  
Jutta Woodland  
Brian Woodman

LIMITED ENGAGEMENT

DOUG LEE & ASSOCIATES PRESENT

**LITTLE SHOP OF HORRORS**

OCTOBER 30 - NOVEMBER 1  
MCPHERSON PLAYHOUSE  
TICKETS: 250.386.6121 | RMTS.BC.CA  
A BENEFIT IN SUPPORT OF KALEIDOSCOPE THEATRE  
WWW.KALEIDOSCOPE.BC.CA

LANGHAM  
★ COURT ★  
THEATRE

NOV 18 – DEC 5, 2015  
**DOUBT, A PARABLE**  
A DRAMA BY JOHN PATRICK SHANLEY  
DIRECTED BY DON KEITH  
*illusive truth & consequences*

250.384.2142 langhamtheatre.ca



## Art Exhibition

**12 local artists will be showing their works of art for sale  
Oct 1 to Oct 17 2015 in the Langham Court Theatre Lounge Gallery.**

Langham Court Theatre has invited artists of various styles and mediums to exhibit original work for a group show inspired by the play.

The art show concept is to connect art to the theatrical production allowing the theatre audience to experience a unique visual opportunity through the eyes of an artist. Don't be surprised if you find a touch of zany for this one!

The theatre will be open **Sunday Oct 4, from 1 to 3pm** for viewing and a chance to meet the artists in person at a public reception held in the Lounge Gallery at Langham Court Theatre. Please check our website for alternative viewing times at: [www.langhamtheatre.ca](http://www.langhamtheatre.ca)

*Light refreshments will be served. No host bar will be available.*

**P R E S T I G E**  
PICTURE FRAMING ETCETERA

OVER 30 YEARS IN VICTORIA AT 2002 OAK BAY AVENUE  
250-592-7115 • [www.prestigepictureframing.ca](http://www.prestigepictureframing.ca)

*"Let us care for your art."*

### WE WANT YOU TO BE INVOLVED!

Langham Court Theatre is a Community Theatre in every sense. The community provides our actors, directors, designers, stage managers, crew, ushers, bartenders, etc., etc., etc. Our audiences come from the community. And what we do helps to build the community



we all love and live in. We want YOU to be a part of this wonderful Langham Theatre story. Volunteer, see a show, and let us know what you like, what you don't like and any ideas about how we can make this special place even more special. I would love to hear from you personally. Please email any comment to me, Tom McCarthy, your new General Manager at [theatremanager@langhamtheatre.ca](mailto:theatremanager@langhamtheatre.ca). Can't wait to hear from you!

# The Victoria Theatre Guild

*The Victoria Theatre Guild is grateful for the generous support of the people listed here. Their contribution is an important reason the Langham Court Theatre is able to do its part in making Victoria the great place it is.*

## **BENEFACTORS**

(\$50,000+)

Jack Droy

## **DESIGNERS**

(\$1,000-9,000)

The City Of Victoria

Keith Digby

The Estate of Jane French

The Estate of Jack Droy

Paul Terry

## **STAGE MANAGERS**

(\$400-999)

Todd Carter

Elizabeth Chatfield

Dorothy Hosie

Donald Johannessen

Bill Kovits

Laurie McIndoe

Carmen Pitcher

Margaret L. Smith

Suzanne Stewart

## **LEADING ACTORS**

(\$100-399)

Anonymous

Gordon Alexander

Kenneth Austin

Rosemary Balfour

Glenn Boughton

Sherry Butler

Heather Cameron

Adelle Clements

Patricia Davey

Laura Davison

Barbara Fields

Philomena Hanson

Gil Henry

Bruce Howe

Fay Husband

Ned Lemley

Bruce MacKenzie

Tom McCarthy

Diane McLaren

Elizabeth Riehm

Jon Scheer

Mary Jean Smith

Michael Tyler

Barbara Waldner

Barrie Webster

Derek Whittle

Jean Wright

Space does not permit us to individually express our gratitude to the 60 Supporting Players who have contributed up to \$99 each. We thank you all!

## **MEDIA SPONSORS**



**FOCUS**

**ArtsVictoria**  
artsvictoria.ca/promo

## **TELEVISION MEDIA SPONSOR**



Vancouver Island

## **RADIO MEDIA SPONSORS**



## **BUSINESSES**



VICTORIA  
FOUNDATION

**island**  
office equipment ltd.

The Victoria Theatre Guild and Dramatic School is grateful for the financial support of the Province of British Columbia Gaming Policy and Enforcement Branch.

Langham Court Theatre is very proud to support ArtsCalibre Academy through our not-for-profit fundraising opportunity.

2015/16 DINNER SHOW SEASON

# GUESS WHO'S COMING TO DINNER?

## Almost Johnny Cash

WITH DAVID JAMES & BIG RIVER

FRIDAYS & SATURDAYS  
OCTOBER/NOVEMBER

Dinner Show season returns to the Oak Bay Beach Hotel as we launch with the thrill of an authentic "Man In Black" show featuring the stories and music of Johnny Cash, paired alongside a gourmet three-course themed menu.



## A Crooner's Christmas

SELECT DATES IN  
DECEMBER

Join rising star Kristina Helene and surprise guests as they lovingly recreate the sounds of Christmas past with the holiday hits from Frank Sinatra, Brenda Lee, Dean Martin, Marilyn Monroe, Elvis and other great stars. It is the perfect way to find your Christmas Spirit and start your holidays with a smile and a song.



INDIVIDUAL TICKETS | \$89<sup>pp</sup> + tax

Enjoy a delicious served three course meal consisting of a starter, entrée and dessert in the beautifully appointed David Foster Foundation Theatre.

BOOK YOUR TICKETS AND PACKAGES  
IN PERSON, BY PHONE OR ONLINE

[OAKBAYBEACHHOTEL.COM](http://OAKBAYBEACHHOTEL.COM)

📞 250.598.4556 | 1175 BEACH DRIVE - VICTORIA, BC

**OB**

OAK BAY  
BEACH HOTEL



DEON VENTER *Mythos/ Logos*  
October 14 - 31, 2015

Deon Venter, *Mythos*, oil, 18x14"



WINCHESTER GALLERIES

2260 Oak Bay Avenue 250-595-2777

[winchestergalleriesltd.com](http://winchestergalleriesltd.com)