

★ LANGHAM COURT THEATRE ★

PRESENTS



An Inspector Calls

A Mystery by
J.B. Priestley

Directed by
Tony Cain

MAR ★ APR
26^{to} ★ 13
2025

For easier
viewing, please
use this QR code
for an online
version of our
programme.

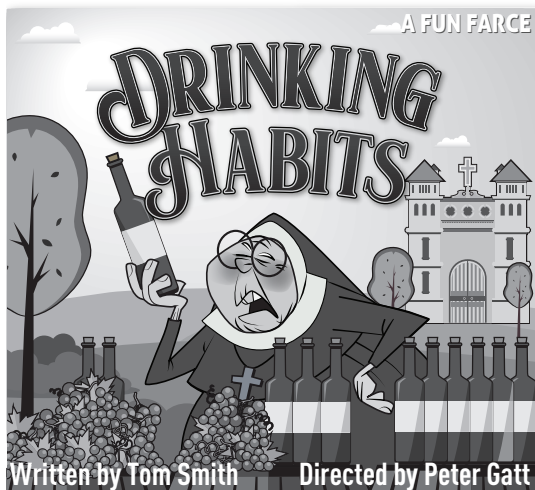


An Inspector Calls is presented by special arrangement with Broadway Licensing, LLC,
servicing the Dramatists Play Service collection (www.dramatists.com)



ST. LUKE'S PLAYERS

COMMUNITY THEATRE SINCE 1948



Evenings

7:30

**Jun 11–14
& 18–21**

Matinees

2:00

Jun 14, 15, 21, 22

*Drinking Habits is presented
by arrangement with
Playscripts, Inc.
www.playscripts.com*

Tickets \$18.00 available online via eventbrite, The Papery at 724 Fort St, or at the door

All performances are held at St Luke's Community Hall, 3821 Cedar Hill X Rd • Like us on Facebook

Website: www.stlukesplayers.org • Phone: 250-884-5484 • Email: stlukesplayers@yahoo.ca

**LANGHAM
★ COURT ★
THEATRE**

COSTUME LOFT

Langham's Costume Loft
is open to all renters
– for stage productions,
film and everyone else.

**Dress up for
Something! Create
a costume for your
special event!**

Email: [costumeloft@
langhamtheatre.ca](mailto:costumeloft@langhamtheatre.ca)
Ph: 250.384.2025
Insta: @lccostumeloft

Wednesday and Thursday 1–5pm

Friday 12pm–5pm and Saturday 10am–3pm

Note: Our rental fees do not include cleaning. Unless
otherwise indicated by staff, cleaning is required
for all rented costumes. A credit card (Visa or MasterCard)
is required to secure each rental.



June 25 to July 13

Written by

Norman Barasch and Carroll Moore

Directed by **Toshik Bukowiecki**

Tickets are available by phoning **250.384.2142**
or online at langhamtheatre.ca

THE CAST IN ORDER OF APPEARANCE

Bill ChristieArthur Birling

Henry SkeyGerald Croft

Emme SaitSheila Birling

Elizabeth WhitmarshSybil Birling

Emily LinzeyEdna

Acacia CousinsEdna

Ty DeLisleEric Birling

Willis TaylorInspector Goole

Luke BellUnderstudy for Gerald

Performing April 9th

SETTINGS

TIME

An evening in spring 1912

SETTING for Act I, II & III

The dining room of the Birlings' house in Brumley,
an industrial city in the North Midlands, England.

There will be a 20 minute Intermission

LCT gratefully acknowledges the lək'wəŋən Peoples, on whose traditional territories we create and perform, and the Songhees and Esquimalt Peoples whose historical relationships with the land continue to this day. We are committed to listening, learning and collaborating as active participants in truth and reconciliation as we create on this beautiful land.

THE PLAYWRIGHT



J.B. Priestley – Author

Priestley served in the infantry in World War 1 (1914-19) then studied English literature at Trinity College, Cambridge. He thereafter worked as a journalist and first established a reputation with essays collected in *The English Comic Characters* (1925) and *The English Novel* (1927). He achieved success with *The Good Companions* followed by his most solidly crafted novel, *Angel Pavement*, a sombre, realistic depiction of the lives of office workers in London. Among other important novels are *Bright Day* and *Lost Empires*. Priestley was also a prolific dramatist, and achieved early success on the stage with such robust comedies as *Laburnum Grove* (1933) and *When We Are Married* (1938). He also used time distortion as the basis for a mystery drama with moral overtones, *An Inspector Calls* (1946). Many of his plays feature skillful characterizations of ordinary people in domestic settings.

ART in the LOUNGE

Ainsley Lauren Guzman

Jason, a figurative painter and muralist from Victoria, has emerged as a prominent force in the local art scene. Her work has garnered attention and is in spaces of businesses and organizations around Victoria as she continues to grow her reputation. Since completing her BFA at Alberta University of the Arts in 2017, she has sold commissions and painting murals for businesses across Canada. Ainsley's latest paintings, on display at the Gage Gallery, are a reflection into her soul, inviting viewers to immerse themselves in the powerful emotions she captures.

Russ Reynolds, is an avid art collector, as well as a businessman who is also a conceptual production artist producing large scale artworks for public and private venues in Victoria. Russ has a Masters degree in business (MBA) and is a Vancouver Island School of Art board member. He is dedicated to creating a fair model to help artists monetarily further their careers. Russ is currently producing future Nelson Mandela art exhibits in collaboration with other artists and in cooperation with Mr. Mandela's children and the House of Mandela Art International.

GRATEFUL ACKNOWLEDGMENTS

Paul Bucci and Monday Magazine, Victoria On Stage Musical Theatre, Misty Buxton, Lal O'Connor, Wendy Henderson, John Makkinga, Karrie Wolfe, Henry Skey, St. Luke's Players Community Theatre, Gordon Alexander, The Wine MAaker at Royal Oak, Aanika & Martin White.

There are many vibrant and creative opportunities in volunteering with Langham Court Theatre

ushering, bartending, acting, directing, producing, stage managing, costume design, lighting design, sound design, set painting/decor, set construction, backstage crew, tech operators, committee work

DIRECTOR'S NOTES



Priestley presents the audience with powerful social and political messages regarding equality and inequality, rife in 1912 and still prevalent in 1945 that echo, in many ways, our current state. The Birling family represents a horrifying microcosm of society that prompts us to question the lack of equality, empathy, and compassion of gender, class, and race in an ever increasing unjust world. Priestley believed in his day that society's values considered socialism to be frowned upon by many and capitalism as the ideal and focused too much on individual gain at the expense of those less fortunate. Priestley's writing is not so much a crime thriller but more in the genre of a morality play that promotes the idea of a kinder, fairer society and draws on Christian ethics that guard against man's indiscretions relating to the Seven Deadly Sins like Pride, Lust, Wrath, Envy and Greed, and is meant to be a stark warning to a post war audience in the mid 1940's against the immoral behaviour of those with the avaricious pursuit of wealth, status, power and privilege. It is for today's audience to reflect on our perceptions of whether we are living in a twenty first century society declining back into a time of division, exploitation, and greed similar to 1912. Priestly leaves us with positive notes from Sheila and Eric Birling, as the younger generation, that take responsibility for their bad behaviour and pursue the ideals of humanity and fairness. *An Inspector Calls* is a contemporary classic that is continually performed on stages around the world and, as in many classic dramas, that a constant reminder is in order. ~ Tony Cain, Director



The most excellent cast.

THE CAST IN ORDER OF APPEARANCE



ARTHUR BIRLING – Bill Christie

Arthur trained in the UK at RSAMD. Involved in several independent film projects and TV Commercials, including Leo Award winning Web series *Freshman's Wharf* and feature film *Jackhammer*. Past President of Peninsula Players, he acted in and directed several plays. For LCT: *Humble Boy*, *Heroes* and *The Winslow Boy*. After 10 years away, Bill is delighted to be on stage again.



GERALD CROFT – Henry Skey

Henry is thrilled to portray the same role as his father did at the Neptune Theatre (Halifax) in 1982 which his mother directed! He is very grateful for the love and support of his wife Kyla and the rest of his family, Alexandra, Emily, Arlin, Beau, Watts and the Patterson Clan.



SHEILA BIRLING – Emme Sait

Emme is an actor and writer from Yorkshire, UK. Her recent theatre credits include: Cassie in *The Wickhams: Christmas at Pemberley* and Daphne in *Present Laughter* (LCT). She is grateful to be part of *An Inspector Calls* and help bring Priestley's powerful story and important message to the Langham stage.



SYBIL BIRLING – Elizabeth Whitmarsh

Elizabeth's association with Langham Court began in 2008, principally as an actor and occasionally as a Stage Manager. *An Inspector Calls* is a demanding play for everyone—cast, crew, and audiences! Elizabeth feels privileged to once again be directed by Tony Cain and to be part of a strong cast.



EDNA – Emily Linzey

Emily, an actor with a Theatre Arts degree from the UK, is thrilled to make her debut as Edna and Assistant Stage Manager at Langham Court Theatre. With a diverse background in theatre, film, and TV, she's excited to bring her experience to the Canadian stage and is grateful for the opportunity to collaborate with such a talented team.

THE CAST IN ORDER OF APPEARANCE



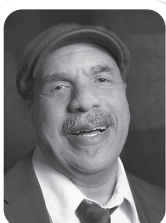
Edna – Acacia Cousins

Acacia performed in musical theatre productions throughout high school and helped with costumes for Langham Court's *The Wickhams: Christmas at Pemberley* last winter. She is thrilled to be working alongside such a talented cast and crew.



ERIC BIRLING–Ty DeLisle

This is Ty's first production with Langham Court Theatre. Last seen in *Switzerland*, Ty is forever grateful to continue working with the best casts and crews in Victoria.



INSPECTOR GOOLE – Willis Taylor

Willis is a veteran actor and director originally from London, UK. He studied at Young Vic Theatre and has been a long time theatre teacher, director and musical theatre producer. In 2024 Willis directed *Much Ado About Nothing* for G.V.F.S. and appeared in Attitude Theatre's *Sunset Limited*. He won Best Actor from Theatre BC for Hoke in *Driving Miss Daisy*.



The wonderful crew.

THE PRODUCTION TEAM

DIRECTOR	Tony Cain		Bobbi Jacob
PRODUCER	Holly McGimpsey	Lighting Crew.....	Matt Ehrler
Asst Producer	Petra London		Andrea Gregg
STAGE MANAGER	Andrea Gregg		Shawn Hateley
Lead ASM	Laurie Best		Debbie Laverty
ASMs.....	Acacia Cousins		Carol-Anne Moore
	Emily Linzey		Luke Stewart-Weston
	François Pellequer		Mark Weston
SET DESIGN	Simon Skey	Lighting Board Ops...	Matt Ehrler
LIGHTING DESIGN ...	Luke Stewart-Weston		Mike Landriault
SOUND DESIGN	Mitch Barnes		Debbie Laverty
Sound Engineer	Alan MacKenzie		Jude Somers
COSTUME DESIGN ..	Peta MacKenzie	Sound Board Ops....	Patrick Heath
SET DÉCOR.....	Claire White		Amanda Heffelfinger
PROPERTIES	Jean de Cartier		Alan MacKenzie
Asst. Properties.....	Petra London		Holly McGimpsey
Choreographer,		Hair & Wigs	Lal O'Connor
Intimacy Coach	Sylvia Hosie	Prompter.....	François Pellequer
Fight Choreographer	John Varszegi	Projections.....	Jason King
HEAD CARPENTER ..	Mike Kuss	Programme	
Set Construction	Gordon Alexander	Coordinator/Ads.....	Holly McGimpsey
	David Burbank	Programme Design ..	Saltchuck Studios
	John Clarke	Publicity	Kathy Macovichuk
	Bruce Dzioba	Programme and	
	Charley Encell	Archival Photos	Terry Stitt,
	Mike Kuss		Kathy Macovichuck
	Allison Power	Front of House Mgr ..	Marilyn Kuss
	Alf Small, Terry Swan	Box Office Manager..	Dick Newson
	Blair Williamson	Bar Manager.....	Tim Pilon
Set Painters	Jane Grainger		



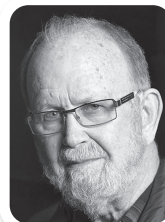
Luke Bell
Understudy



Petra London
Asst. Producer



Laurie Best
Lead ASM



Alan MacKenzie
Sound Engineer

THE PRODUCTION TEAM



DIRECTOR – Tony Cain

Tony presently supports Attitude Theatre as artistic director and is a founding member. He has worked as an actor and director for theatre and film in the UK, Australia and Canada and taught drama at The Citadel in Edmonton. He has produced, directed, and acted for The Belfry, LCT, Bema and St. Luke's Players Community Theatre. Tony trained at the Drama Centre in London, UK .



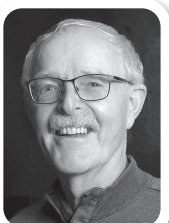
PRODUCER – Holly McGimpsey

After producing and mentoring new producers for all but 2 shows in 2 seasons, Holly is producing the next show plus 2 next season! It's a lot of work but so rewarding to watch each new 'baby' come to life on Opening Night! Holly draws on 60+ years of tackling every job on and off stage and is proud of every show she has worked with.



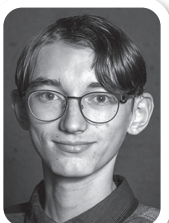
STAGE MANAGER – Andrea Gregg

Andrea is back for her fourth show in a row at Langham Court Theatre. This time she promises to get it right! She is thrilled to be ordering people around again for free. Andrea has been called 'a delight to work with,' by her terrified and intimidated actors.



SET DESIGN – Simon Skey

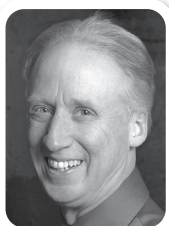
It has been a wonderful experience designing this set and working with the greatly talented director and crew. It was even more special because of my close connection to this particular play (see Henry's bio). Not only did Penelope direct the play, but that was the year we were married.



LIGHTING DESIGN – Luke Stewart-Weston

Luke is thrilled to be volunteering with Langham Court Theatre again. He was a lighting designer for *The Wickhams: Christmas at Pemberley* and *Present Laughter*, and was the Stage Manager for *Ravenscroft*. Luke is a student at Esquimalt High School and has worked as a technician there for *Mean Girls* and *Legally Blonde*.

THE PRODUCTION TEAM



Sound Design – Mitch Barnes

An Inspector Calls marks Mitch's 50th sound design production. He loves working with directors like Tony who see the possibilities of using sound to help create something fresh in a well known play. He is also grateful to his lovely wife, Jo, who puts up with him constantly saying, "Hey! Listen to this!"



Costume Design – Peta MacKenzie

Peta has been a member of Langham Court for 58 years, during which time she has produced numerous shows, assisted many directors and even trod the boards a couple of times. Previous costume design credits: *The Unexpected Guest*, *The Laramie Project*, *84 Charing Cross Road*. For VOS: *Fiddler on the Roof*, *Oklahoma!*, *Carousel* and *Sweeney Todd*.



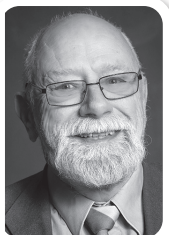
Set Décor – Claire White

Claire has worked with LCT for over a year, and with St. Luke's Players Community Theatre back stage on many shows. She is currently running the Readers' Theatre at LCT. Claire is loving her first time doing Set Décor and says "Welcome to the home of Arthur and Sybil Birling, where dining will never be the same again!" Enjoy!



PROPERTIES – Jean de Cartier

Jean enjoyed the collaboration of working with this enthusiastic cast and crew who, with their diverse experience and knowledge, bring the script to our audiences. It's always fascinating and brilliant to see the sharing of ideas come to reality. May LCT continue to bring theatre to our community for another century!



Head Carpenter – Mike Kuss

This is Mike's 3rd build for Tony and 2nd with Simon. He hopes the set matches the show! Thanks to Charley for crafting the liquor cabinet, David for the crown moulding, Gordon for the streetlight, and Blair, Bobbi, Jane, John and Bruce for the paint and wall décor. We welcomed 2 new builders, Terry and Allison, whom we hope to see again.

LANGHAM BOARD OF DIRECTORS

President.....Caroline Herbert
 Vice-President.....Gloria Di Iorio
 Treasurer.....Dick Newson
 Secretary.....Marilyn Kuss

Members-at-Large: ... Amanda Heffelfinger
 Jacquolynne Keath
 Don Keith
 John Varszegi
 Production Chairs: ... Heather-Elayne Day
 Jim Leard

LANGHAM LIFE MEMBERS

Bill Adams	Charley Encell	Chad Laidlaw	Jon Scheer
Gordon Alexander	John Fear	Sylvia Lindstrom	Drew Shand
Ann Marie Arneson	Phyllis Gaskell	Nan Long	Alf Small
Karrie Ayotte	Corinna Gilliland	Alan MacKenzie	Kevin Stinson
Jim Boardman	Barry Grimshaw	Peta MacKenzie	Nick Stull
John Britt	Jill Groves	Kathy Macovichuk	Paul Terry
Toshik Bukowiecki	Peta Heald	Wendy Magahay	Jean Topham
Lorene Cammiade	Angela Henry	Judith McDowell	Rick Underwood
Roger Carr	Gil Henry	Wendy Merk	Barbara Waldner
Michael Chadwick	Diana Keating	Carol-Anne Moore	Drew Waveryn
Sally Crickman	Jason King	Dick Newson	Jutta Woodland
Jean de Cartier	Marilyn Kuss	Andrea Pite	Brian Woodman
Heather-Elayne Day	Mike Kuss	Jeani Reynolds	

LANGHAM DONORS

Langham Court Theatre Society is grateful for the generous contributions of the people listed below. Their support enables Langham Court Theatre to be a vibrant part of the Victoria Community. Donations listed here have been made up to April 15, 2025. Contact the box office to add your name to this prestigious list and receive a tax receipt.

ESTATE:

Estate of Roger J Bishop
 Estate of Jack Droy
 Estate of Robert Durie
 Estate of Thomas Mayne
 Estate of Kate Mooers
 Michael & Anne Tyler Fund

\$10,000+

Matrix Marble and Stone,
 Duncan, BC

\$2000+

Ian & Gloria Bidgood

\$1000+

Gloria & Ian Back
 Donald & Roberta
 Johannessen
 Suzanne & John Stewart

\$400+

Holly McGimpsey
 Nick Stull

\$200+

Ellen Edmonstone
 Barbara Waldner
 Bill Williamson

\$100+

Gordon Alexander
 Ron Bischler
 Dawn Bradley
 John Fear
 Alan & Peta MacKenzie
 Janie V Morris
 Michael van der Kamp
 Victoria Wray

*Plus 8 donors for other
 amounts totaling \$386*



I N S U R A N C E

830 Pandora Avenue, Victoria
963 Langford Parkway, Langford
951 Canada Ave, Duncan

250-388-5555

www.hsminsurace.com

Insurance is
our only business.