

A Langham Court Theatre presentation of

# Casting for Murder

Written by **Elizabeth Elwood**  
Directed by **Jacqollyne Keath**

**March 12 to March 29, 2026**

**LANGHAM  
★ COURT ★  
THEATRE**

For easier viewing,  
please use this QR  
code for an online  
version of our  
programme.



Produced by special arrangement with ELIHU ENTERTAINMENT [www.elihuentertainment.com](http://www.elihuentertainment.com)

VICTORIA ON STAGE MUSICAL THEATRE SOCIETY

# JOSEPH AND THE AMAZING TECHNICOLOR DREAMCOAT

TICKETS:



SHOWTIMES:

Friday, May 1 & 8 | 7:30 pm  
Saturday, May 2 & 9 | 7:30 pm  
Sunday May 3 & 10 | 2:00 pm  
At the McPherson Playhouse

VOS  
VICTORIA ON STAGE

JOSEPH AND THE AMAZING TECHNICOLOR DREAMCOAT is presented through special arrangement with Concord Theatricals on behalf of The Really Useful Group. [www.concordtheatricals.com](http://www.concordtheatricals.com)

*"I will have poetry in my life. And adventure. And love. Love above all."*

A Langham Court Theatre presentation of

# Shakespeare is Love.

THE PLAY

*"Funny, often genuinely moving, and generates a glow you could warm your hands by..."* – Daily Telegraph

*"An absolute joy from beginning to end!"*  
– Daily Express

Tickets are available online  
at [www.langhamtheatre.ca](http://www.langhamtheatre.ca)  
or at our Box Office 250.384.2142  
805 Langham Court

Based on the screenplay by **Marc Norman** and **Tom Stoppard**  
Adapted for the stage by **Lee Hall** | Music by **Paddy Cunneen**  
Directed by **Heather-Elayne Day** | Music Direction by **Kathy Alexander**

**May 21 – June 7, 2026**

PREVIEW MAY 20

Content Advisory Mature themes

LANGHAM  
COURT  
THEATRE

2

Presented by special arrangement with Concord Theatricals on behalf of Samuel French Inc., [www.concordtheatricals.com](http://www.concordtheatricals.com)

© Disney

## THE CAST IN ORDER OF APPEARANCE

Angela Benson . . . . . Megan Sawatzky  
Bertram Beary . . . . . Dave Baron  
John Rutherford . . . . Kevin Galligan  
Derek Spencer . . . . . Ty DeLise  
Susan Delaney . . . . . Tess Wiens  
Steven Sanders . . . . . Ben McFee  
Charlotte Thornton . . Kaylee Norn  
Adrian Wright . . . . . Nadia Graham

## SYNOPSIS AND SCENES

Angela Benson inherits a fortune when her Aunt Maud is murdered, but the killer is never found. Angela's acting career flourishes, but suspicion continues to cloud her life, even after her marriage to mystery writer, John Rutherford.

### Location

A private island in Southern Gulf Islands, British Columbia

**ACT I** – Scene 1 An early afternoon in September 1995

Scene 2 Nine weeks later, early morning

### *20 minute Intermission*

**ACT II** – Scene 1 Early afternoon the same day

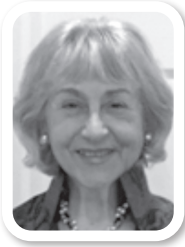
Scene 2 Six hours later

"Shadow in the Hall" Music by John Varszegi,  
Lyrics by Mark Franklin, Vocals by Christine Parker

*PLEASE NOTE: Any video and/or audio recording of this production is strictly prohibited. Please turn off all electronic devices.*

Langham Court Theatre resides on Ləkʷəŋən traditional territory, known today as the Esquimalt and Songhees Nations. We are committed to listening, learning, and collaborating as active participants in truth and reconciliation as we create on this land with humility and thankfulness.

## THE PLAYWRIGHT



### **Elizabeth Elwood** – Playwright

Elizabeth Elwood is a playwright, mystery writer and puppeteer with four plays, six books, many short stories and twenty marionette musicals to her credit. Her plays have been produced across Canada and in the US and her mystery books have drawn favourable reviews and comparisons to Agatha Christie. She is a two-time Derringer nominee and winner of the Crime Writers of Canada Best Short Story in 2022 for *Number 10 Marlborough Place* in Ellery Queen Mystery Magazine. Elizabeth lives with her husband and their independent-minded tabby cat on British Columbia's beautiful Sunshine Coast.

## ART in the LOUNGE

### **Rose Spanan**

Rose is an accomplished art teacher, curator and often acts as a liaison for other First Nations artists. She has worked with galleries, coordinated special events and has worked in television. She has extensive experience with First Nations peoples, groups and organizations, especially in the areas of implementing and directing projects pertaining to Indigenous cultural and artistic expression.

Her mission in the arts is to motivate First Nations artists toward personal growth, cultural integrity and creative ingenuity.

Recently, Rose completed three digital film shorts entitled *Fragile Water*, *Fish Head Soup* and *Food and Friends* where she practiced her new skills of editing, acting and art direction. As well, Rose recently completed thirteen segments as a host for *The New Canoe*, a television program that covers contemporary First Nations artists with honour and respect.

### **There are many vibrant and creative opportunities in volunteering with Langham Court Theatre:**

ushering, bartending, acting, directing, producing, stage managing, costume design, lighting design, sound design, set painting/decor, set construction, backstage crew, tech operators, committee work.

**Contact us to find out how you can take part in our next production. We'd love to see you at Langham. Email: [gm@langhamtheatre.ca](mailto:gm@langhamtheatre.ca)**

### **WE ARE GRATEFUL FOR OUR PARTNERSHIPS WITH:**



VANCOUVER ISLAND  
MARBLE QUARRIES  
EST. 1990



THE UNION CLUB  
OF BRITISH COLUMBIA

**MOXIES**



**Victoria  
Foundation**

## DIRECTOR'S NOTES



### **Jacqollyne Keath** – Director

I have had the privilege of knowing and working with playwright Elizabeth Elwood for 30+ years. *Casting for Murder* was the only play of hers that I hadn't yet worked on. It's been a delight bringing her story driven murder mystery to life. The actors worked on their characters and their backstories very well. We had fulsome discussions about character and plot discoveries during and after rehearsals. This is my year of Murder Mysteries. What fun it's been with still one to go! *Casting for Murder* is set on a private Gulf Island in BC. There are interesting turns of events that unfold as the play moves along and the clever writing makes this a rich story to tell. We had nothing but fun and hard work putting it together for you. Add costumes, props, lighting, sound and projections and we are ready to entertain you. Now, sit back and see if you can figure out who actually killed Maud Sanders.

*The Wonderful Cast*



*The Awesome  
Production Team*

## THE CAST IN ORDER OF APPEARANCE



### **Angela Benson** – Megan Sawatzky

Megan is a dynamic performer with a background in film and television and a deep-rooted love for theatre. With over 15 years of experience, her work has spanned both onstage and behind the scenes as an actor, singer, and director. Recent credits include *The Hollow* and *Out of Sight... Out of Murder* with St. Luke's Players Community Theatre.

---



### **Bertram Beary** – Dave Baron

Dave is modest to a fault, and would never brag about scaling Everest, diving with Jacques Cousteau, managing the Apollo program, or dating Jane Fonda. His long-suffering wife lets him out of the house to do theatre, as it's better than listening to him talking back to the TV.

---



### **John Rutherford** – Kevin Galligan

Although it's his first play, Kevin is no stranger to the stage. After training with Upright Citizen's Brigade Theatre, he spent many years doing long form Improv in New York City. He's been a commercial actor for the last two years and is a baritone singing with The Victoria Choral Society.

---



### **Derek Spencer** – Ty DeLise

Previously performing in *An Inspector Calls*, Ty just couldn't stay away from the LCT stage. He's honoured to bring Elizabeth Elwood's words to life with this supremely talented cast & crew. When he isn't treading the boards, Ty is helping geeks and freaks get into superhero shape. Check him out online @tylovessandwiches.

---



### **Susan Delaney** – Tess Wiens

Tess Wiens moved to Victoria in 2018 and joined Langham Court Theatre. From her start as an Assistant Stage Manager in *Blythe Spirit*, to her first on stage role as Poppy in *Noises Off in 2019*, Tess loves community theatre and how important it is to everyone involved.

## THE CAST IN ORDER OF APPEARANCE



### **STEVEN SANDERS – Ben McFee**

Ben is an actor, author, poet and musician living in Victoria for ten years. He's appeared in Agatha Christie's *The Hollow*, Samuel Beckett's *Endgame*, and his play *A Brief History of Tomorrow* that was mounted in Lethbridge as part of the CASA On Stage program. This is Ben's first show at LCT and he's delighted to be working with a gifted cast and crew.



### **CHARLOTTE THORNTON – Kaylee Norn**

This is Kaylee's theatrical debut with Langham Court Theatre. She holds a Theatre Diploma from VIU and has extensive experience on stage. She is grateful for the cast, crew, and production team that made this show possible and, for you, dear audience. Without you, there would be no us.



### **ADRIAN WRIGHT/ASM – Nadia Graham**

Nadia is delighted to be on stage again after a long break. Her last appearance was in a production of *Mother Goose* at the Metro Theatre in Vancouver many years ago. Most recently, she was Assistant Stage Manager for *The Hollow* with St. Luke's Players Community Theatre.

## **Keep our theatre strong with your legacy donation.**

With almost 100 years of producing live community theatre behind us, we are focused on the future. When you donate to Langham Court Theatre, your gift makes a difference. Every dollar you contribute goes directly towards the work on our stage, provides engaging and high-quality theatre, and helps to create exceptional performances for years to come.

No matter the gift size, by making a gift of a bequest, an endowment, or donation, you play a vital role in creating a long-lasting impact. Your gift will have a direct impact on helping Langham Court Theatre continue to make magic on our stage and keep our doors open for community theatre.

**To make a bequest or donation, please send an email to [gm@langhamtheatre.ca](mailto:gm@langhamtheatre.ca) or call 250-384-2142.**

## THE PRODUCTION TEAM

DIRECTOR/  
STAGE MANAGER . . . . Jacqollyne Keath

PRODUCER . . . . . Carol-Anne Moore

Asst. Stage Mgrs . . . . . Nadia Graham  
Kyla Mellish

SET DESIGN . . . . . Simon Skey

LIGHTING DESIGN . . . . Matt Ehrler &  
Andrea Gregg

SOUND DESIGN . . . . . Phil Letourneau

COSTUME DESIGN . . . . Deborah Adams

PROPERTIES . . . . . Syren Smith

SET DÉCOR . . . . . Airlie Longpre

HEAD CARPENTER . . . . Mike Kuss

Set Construction . . . . .Gordon Alexander  
John Clarke, Bruce Dzioba  
Sheila McLennan  
Bruce Murray, Alf Small  
Terry Swan, Mark Weston  
David Wylie

Set Painter . . . . . Bobbi Jacob

Faux/Scenic Painter . . Bert Laging

Lighting Crew . . . . . Carol-Anne Moore  
Eric Partridge, Nancy Pearson  
Brian Wingerter, Mark Weston  
Karrie Wolfe

Lighting Board Ops . . . .Debbie Laverty  
Carol-Anne Moore  
Eric Partridge, Jude Somers  
Mark Weston

Sound Board Ops . . . . .Patrick Heath  
Lorne Kraft, Phil Letourneau  
François Pellequer  
Jude Somers

Projections . . . . . Jason King

Programme  
Coordinator . . . . . Holly McGimpsey

Programme Design . . . . Saltchuck Studios

Publicity . . . . . Kathy Macovichuk

Programme Photos . . . . Saltchuck Studios

Archival Photos . . . . . Terry Stitt

Box Office Mgr . . . . . Dick Newson

Front of House Mgr . . . . K.C. Johnson



Nadia Graham



Kyla Mellish

**Asst. Stage Managers**

## GRATEFUL ACKNOWLEDGMENTS

Jude Somers, Gord More, St. Luke's Players Community Theatre

## THE PRODUCTION TEAM



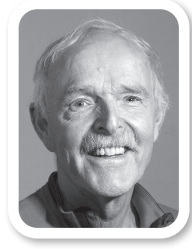
### **DIRECTOR/STAGE MANAGER – Jacqollyne Keath**

Jacqollyne is thrilled to direct and stage manage again at LCT. This is her season of Murder mysteries! Recently she directed Agatha Christie's *The Hollow* for St Luke's Players and will be set decorator for their May show, *Acting Can be Murder*. She thanks her wonderful cast and crew and producer Carol-Anne for their wonderful team work.



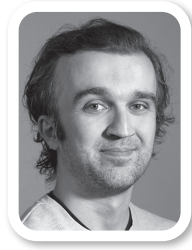
### **PRODUCER – Carol-Anne Moore**

Carol-Anne has been part of LCT for years in various capacities. This is her first time producing after many years in lighting design. I thank the cast and crew, those who bring their talents to this creation, the behind-the-scenes folks who keep the theatre running, and you, who come to share this 'magical world' with us.



### **SET DESIGN – Simon Skey**

I am honoured to design this set for Jacqollyne. My work is nothing until the talented crew get to add their own particular magic of building, lighting, decorating, painting and projecting; bringing it all together. The result is this wonderful, isolated and sometimes mysterious space in the Gulf Islands. Enjoy.



### **LIGHTING DESIGN**

#### **Matt Ehler & Andrea Gregg**

Andrea and Matt are delighted that *Casting for Murder* is their 6th show lighting together and first time as co-designers. Previous shows: *Now & Then* (LCT 2025), *Bacon* (Theatre Inconnu 2025). They thank Karrie, Carol-Anne, Luke & Jason for sharing their expertise.



### **SOUND DESIGN – Phil Letourneau**

Originally from Edmonton, studying electronics at N.A.I.T., Phil moved to Victoria in 1980. He worked at Sound Hounds as head technician for a number of years before operating his own business for 9 years. Phil has been involved in community theatre for 5 years with St. Luke's Players Community Theatre as one of their sound technicians.

## THE PRODUCTION TEAM

### Costume Design – Deborah Adams



Deb finds coordinating the costumes for a play a bit like doing a jigsaw puzzle, the reward is in finding pieces that fit! She recently worked with Jacqollyne Keath on *The Hollow*, for St. Luke's Players Community Theatre, and has been sporadically involved with LCT for 20 years in various guises: as an actor, ASM, dresser, and costume coordinator.

### PROPERTIES – Syren Smith



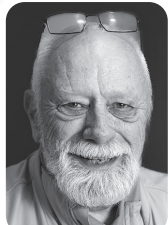
Syren is a newer member of the Langham Court family. She started with *Sonia, Vanya, Masha, & Spike* as an ASM and now is doing props for the first time for *Casting for Murder*. Syren hopes you enjoy this hilarious murder mystery that will leave you surprised and satisfied!

### Set Décor – Airlie Longpre



Airlie has been dancing and performing since the age of 3. She studied in Toronto, performed for many years at Butchart Gardens, Victoria On Stage and choreographed a few shows along the way. After retiring from the stage, Airlie moved backstage to the props department at VOS in 2023 and with Langham Court in 2025.

### Head Carpenter – Mike Kuss



This is my second build with Simon as the Set Designer this season, *Unity (1918)*. It is also my second build for Jacqollyne as a Director, *Maggie's Getting Married*. I've been very happy with both and look forward to working with either, or both, of them again in the future! Enjoy the show!



**ST. LUKE'S  
PLAYERS**

Community Theatre Since 1948

**Eves 7:30**

**May 20–23 & 27–30**

**Mats 2:00**

**May 23, 24, 30, 31**

# ACTING CAN BE MURDER

**A PUZZLING  
MYSTERY**

**Written by  
Eddie McPherson**

**Directed by  
Lorne Seifred**

Tickets \$18.00 available online via eventbrite, at The Papery 734 Fort St. or at the door  
All performances are held at St. Luke's Community Hall, 3821 Cedar Hill X Rd • [www.stlukesplayers.org](http://www.stlukesplayers.org)

## LANGHAM BOARD OF DIRECTORS

President.....	Caroline Herbert	Members-at-Large: ...	Noah Gallant
Vice-President.....	Gloria Di Ioia		Jacquelyne Keath
Treasurer.....	Eric Partridge		Dick Newson
Secretary.....	Kyla Mellish	Production Chairs: ...	Heather-Elayne Day
Technical Director ....	Jason King		Jim Leard
Administrative Services Coordinator..	Denise Armstrong		

## LANGHAM LIFE MEMBERS

Bill Adams	Charley Encell	Chad Laidlaw	Jeani Reynolds
Gordon Alexander	John Fear	Sylvia Lindstrom	Jon Scheer
Ann Marie Arneson	Corinna Gilliland	Nan Long	Drew Shand
Karrie Ayotte	Barry Grimshaw	Alan MacKenzie	Alf Small
John Britt	Jill Groves	Peta MacKenzie	Kevin Stinson
Toshik Bukowiecki	Peta Heald	Kathy Macovichuk	Nick Stull
Lorene Cammiade	Angela Henry	Wendy Magahay	Paul Terry
Roger Carr	Gil Henry	Judith McDowell	Jean Topham
Michael Chadwick	Diana Keating	Wendy Merk	Barbara Waldner
Sally Crickman	Jason King	Carol-Anne Moore	Drew Waveryn
Jean de Cartier	Marilyn Kuss	Dick Newson	Brian Woodman
Heather-Elayne Day	Mike Kuss	Andrea Pite	

## LANGHAM DONORS

*Langham Court Theatre Society is grateful for the generous contributions of the people listed below. Their support enables Langham Court Theatre to be a vibrant part of the Victoria Community. Donations listed here have been made since March 2025. Contact the box office to add your name to this prestigious list and receive a tax receipt.*

### ESTATE:

Estate of Roger J Bishop  
 Estate of Jack Droy  
 Estate of Robert Durie  
 Estate of Thomas Mayne  
 Estate of Kate Mooers  
 Michael & Anne Tyler Fund

### \$10,000+

Matrix Marble and Stone  
 Duncan BC

### \$2000+

Ian Bidgood & Gloria Di Ioia  
 Anonymous

### \$1000+

Gloria & Ian Back  
 Marjorie & Ian Clark  
 Tomiko Ludwig  
 Suzanne & John Stewart  
 Joan Wells

### \$200+

Ellen Edmonstone  
 William Gibson  
 Jane Grainger  
 Holly McGimpsey  
 Diane H McLaren  
 Lois Rhodes

### \$100+

Diane Adolph  
 Anonymous

Dawn Bradley  
 Adelle Clements  
 Neil Crosswell  
 Robert Furber  
 John Hopewell  
 Patricia Kidd  
 Dennis Normandin  
 Justin Stephenson  
 Kenneth Thornicroft  
 Randy Voldeng  
 Barbara Waldner  
 Barrie & Phyllis Webster  
 Marni Wedin  
 Victoria Wray

*Plus 126 donors for other amounts totaling \$1,705*

Victoria's  
Jewish theatre

bema  
productions

Adapted from the  
powerful 2019 memoir,  
"One Holocaust  
Survivor's Journey  
from Poland to  
America" by  
Melvin Goldman  
& Lee Goldman Kikel

an original play by L.E. McCullough

# PERSEVERANCE

## PERFORMANCES

April 22, 7:30pm

April 23, 7:30pm

April 26, 3:00pm matinee

April 27, 7:30pm

For further information  
contact [zeldadean@shaw.ca](mailto:zeldadean@shaw.ca)

April 28, 7:30pm

April 29, 7:30pm

April 30, 7:30pm

May 3, 3:00pm matinee

TICKETS **\$25**

<http://ticketowl.io/bemaproductions>

Congregation Emanu-el Black Box Theatre  
1461 Blanshard Street, Corner of Blanshard and Pandora



Congregation  
Emanu-El

